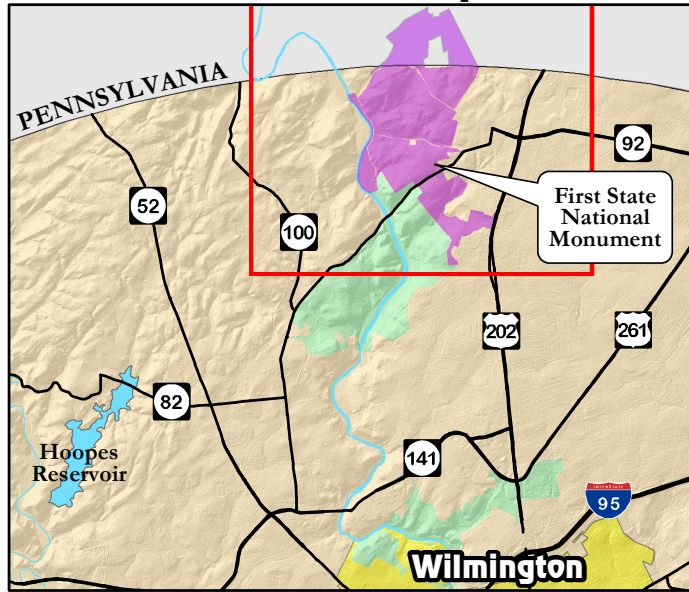


First State National Historical Park

Location Map



Legend

- | | |
|--------------------------------------|-------------------------|
| First State National Historic Park | Picnic Tables |
| Delaware State Park Lands | Canoe Access |
| Woodlawn Trustees | Fishing |
| Municipalities | Primitive Youth Camping |
| Water | Hiking |
| Parking | Biking |
| Restrooms - Seasonal | Horseback Riding |
| National Park Service Ranger Station | |

October 2015

Park Information

Park Office (302) 478-2769
 4501 Thompsons Bridge Rd
 Wilmington, DE 19803
www.nps.gov/frst



National Park Service

Trails

- Unnamed Trail
- Brandywine Trail (2.9 miles)
- Creekside Trail (2.4 miles)
- Longwall Trail (1.1 miles)
- Rocky Run (1.8 miles)
- Rocky Run cut-off (0.4 miles)
- National Recreation Trail

