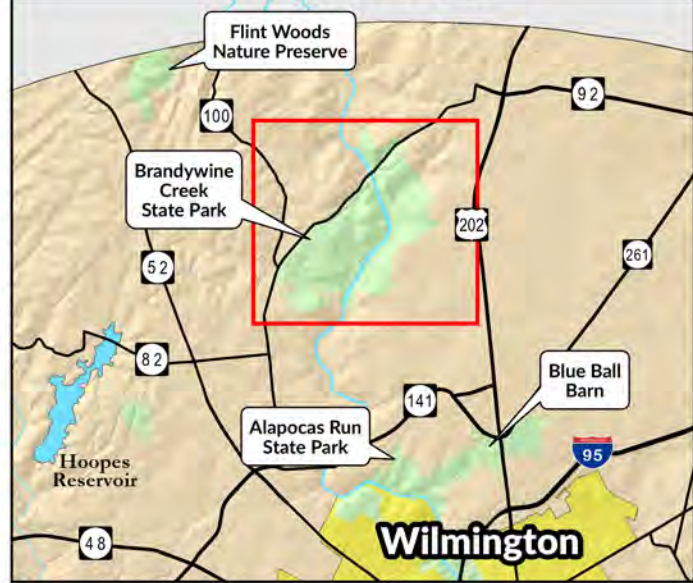


# Brandywine Creek State Park

## Location Map



## Legend

- |  |   |  |                         |
|--|---|--|-------------------------|
|  | Open Park Land  |  | Picnic Pavilion         |
|  | Forested Park Land                                    |  | Picnic Tables           |
|  | First State National Monument (National Park Service) |  | Amphitheater            |
|  | Woodlawn Trustees                                     |  | Trail Head              |
|  | County Parks  |  | Disc Golf               |
|  | Municipalities  |  | Canoe Access            |
|  | Building  |  | Fishing                 |
|  | Parking   |  | Scenic Overlook         |
|  | Water   |  | Primitive Youth Camping |
|  | Restricted Areas                                      |  | Sledding                |
|  | Freshwater Marsh                                      |  | Hiking                  |
|  | Stone Wall  |  | Biking                  |
|  | Parking   |  | Horseback Riding        |
|  | Information Board                                     |  |                         |
|  | Restrooms   |  |                         |

Updated: October 2019

## Park Information

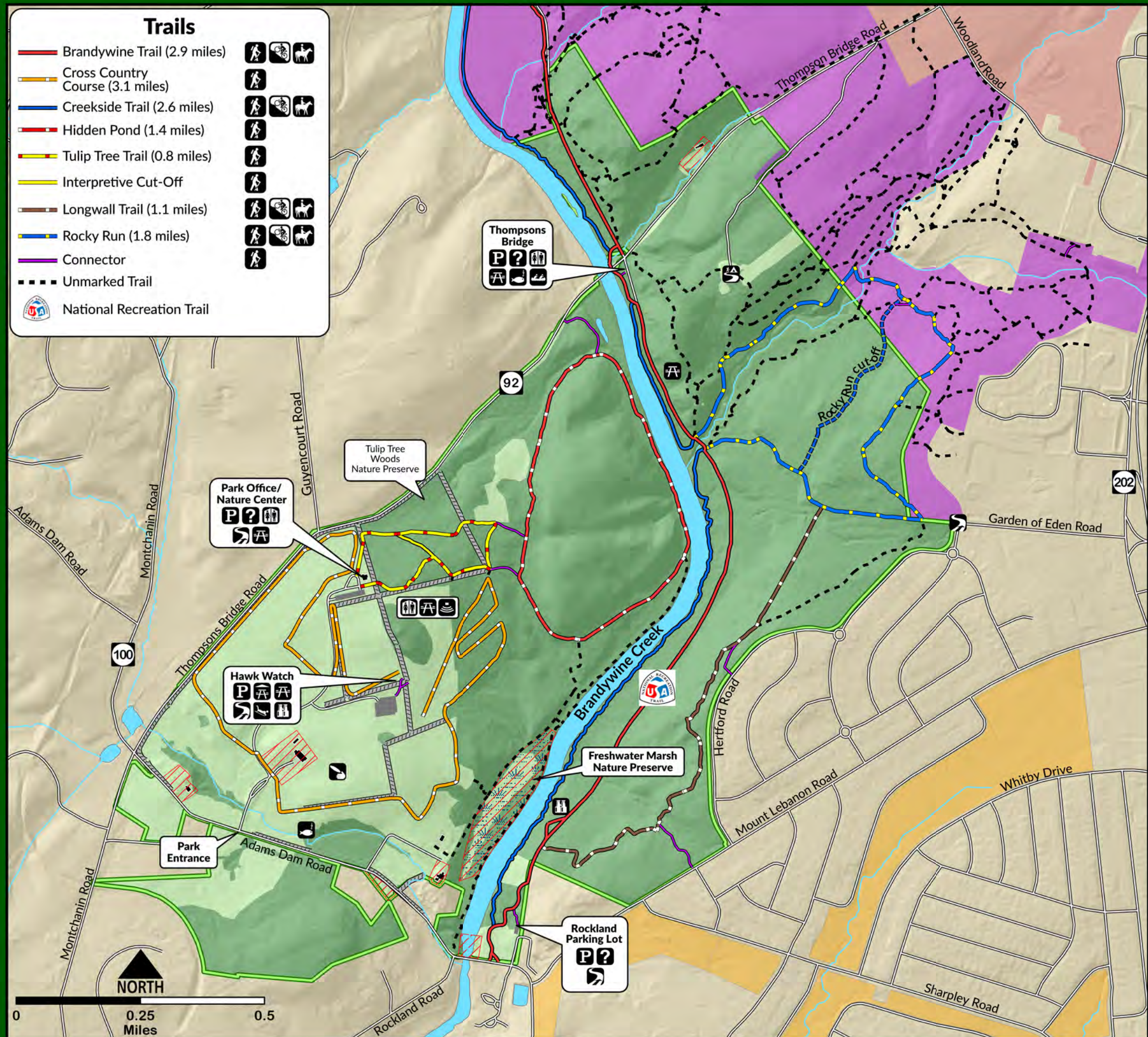
Park Office (302) 577-3534 Nature Center (302) 655-5740  
 P.O. Box 3782 Greenville, DE 19807  
[www.destateparks.com](http://www.destateparks.com)



**DELAWARE STATE PARKS**  
 YOUR OUTDOOR ADVENTURE STARTS HERE

## Trails

- |  |                                  |  |  |  |
|--|----------------------------------|--|--|--|
|  | Brandywine Trail (2.9 miles)     |  |  |  |
|  | Cross Country Course (3.1 miles) |  |  |  |
|  | Creekside Trail (2.6 miles)      |  |  |  |
|  | Hidden Pond (1.4 miles)          |  |  |  |
|  | Tulip Tree Trail (0.8 miles)     |  |  |  |
|  | Interpretive Cut-Off             |  |  |  |
|  | Longwall Trail (1.1 miles)       |  |  |  |
|  | Rocky Run (1.8 miles)            |  |  |  |
|  | Connector                        |  |  |  |
|  | Unmarked Trail                   |  |  |  |
|  | National Recreation Trail        |  |  |  |



NORTH

0 0.25 Miles 0.5