

FUTURE TRAILS OF NORTHERN DELAWARE COALITION MEETING

OCTOBER 29, 2020 1PM-2:30PM



The Future Trails of Northern Delaware Coalition brings together government, organizations, corporations and groups from all walks of life, all interests and sector of society to advance trail development in northern Delaware.



THANK YOU ALL FOR JOINING THE MEETING!

- **Here are a few housekeeping items to keep us on track and make best use of our time together.**
 - **Please keep yourself muted throughout the presentations.**
 - **Type all questions into the chat window. After each agenda item we will provide opportunity to answer questions.**



MEMBER COMMUNICATION

In mid-November a coalition newsletter will be distributed to all members and supporters recapping today's meeting.

AGENDA

1. **Welcome/Introductions**
2. **Results of Coalition Survey**
3. **Trails Usage and Safety**
4. **Trail Amenities Matching Grant Opportunity**
5. **Trail Updates**
 - Commons Boulevard Trail
 - Newport River Trail
 - Brandywine Heritage Trail
 - Governor Printz Boulevard
6. **Member and Supporter Updates**
7. **New Business**



WELCOME/INTRODUCTIONS

Future Trails of Northern Delaware Coalition Members

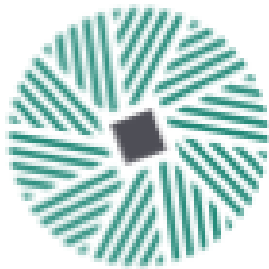


Coalition Supporters



STEERING COMMITTEE

- Brandywine Conservancy
- Delaware Greenways
- Delaware Nature Society
- East Coast Greenway Alliance
- WILMAPCO

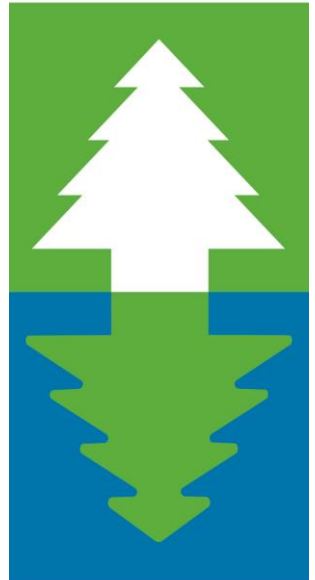


**BRANDYWINE
CONSERVANCY**



WILMAPCO

East Coast



**Greenway[®]
ALLIANCE**

COALITION SURVEY

- **Steering committee developed survey to identify priorities for Coalition's work program for 2020-2021**
- **Survey sent to all Coalition members & supporters, August 2020.**
- **36% of members and supporters responded**

Thank you for responding to the survey.

IS THE COALITION & ITS PLANNING INCLUSIONARY?

- I. Coalition is inclusionary and equitable in its planning. **Room for improvement exists.**
 - Coalition is representative of the communities in Northern New Castle County
 - **Voices missing from trail planning.**
 - **Non-traditional recreational trail users (all backgrounds and abilities)**
 - **Underserved populations**
 - **Youth**
 - **Increase engagement with non-traditional recreational users (all backgrounds and abilities), underserved populations, schools and youth organizations. (Steering Committee to consider and reconnect with Coalition members)**

COALITION PRIORITY TRAIL PROJECTS

The next question refers to Coalition Priority Trail Projects

Below is a list of the Coalition's current priority trail projects.

Define: Priority Trail Project – major trail projects that connect to the watershed as identified by the Coalition that are a main focus.

- Commons Boulevard Trail
- Newport River Trail
- Brandywine Heritage Trail
- Governor Printz Boulevard

PRIORITY COALITION TRAIL PROJECTS

Are there new trail projects the Coalition should consider a priority?

II Priority areas for trail planning.

- **Underserved and disinvested neighborhoods**
- **Unincorporated areas**

Next steps: More information the recommended projects will be sent in November Newsletter. At next Coalition Meeting the addition of priority projects will be discussed.

Potential priority projects recommended by members?

Millcreek Neighbors Trail Legs
Connection between JAM and Battery Park
Gaps at PA/DE border
Separating traffic in downtown Wilmington
Gaps along the ECG
Riverview and Claymont
Low stress bikeways
Reach Riverside Master Plan

How do the projects above correspond to priority area identified in II? What other projects should be considered?

CONNECTING COALITION MEMBERS

How coalition member programming would be enhanced by trail connections/improvements.

- Increase access to cycling
- Provide additional programming opportunities
- Provide safe access for youth to church, pools, schools and parks.
- Allow ECG riders to be separated from traffic
- Improved access to community centers
- Expanded programming
- On average coalition members without a direct connection to a trail are within 1-3 miles of an existing or planned trail.
- Barriers that keep member facilities from connecting?
 - Land ownership
 - Capturing ROW/Easements
 - Legislative support
 - Funding

Next Steps: Work to identify solutions to barriers to allow access to programming for organizations along trails. Help facilitate communication between Coalition members and supporters

TRAIL USAGE DATA & SAFETY

III. Need for reliable & consistent trail usage data was identified as a priority

- What data is currently used to support programming?
 - City of Newark Police statistics
 - Count data at facilities
 - DelDOT count information
 - Census data
 - Traffic counts/AADT
- Usage data plays a vital role in programming and funding.

Establish a path forward to ensure a comprehensive trail count program exists for FTND study area.

IV. Trail usage in Northern New Castle County and beyond has increased as a result of COVID-19.

- Jack A. Markell Trail (Wilmington)

Up 96.8% on weekdays and up 33 % on Weekends / up 64% average

Trail courtesy and safety concerns have increased along with trail usage.

- **Develop a program to address trail courtesy and safety in FTND study area.**

TRAILS USAGE AND SAFETY

We are forming a committee to Trail Usage and Safety in the FTND Study Area. Please enter your name in the chat window if you'd like to be a part of the committee.

Will you join us in this important work?

- Anthony Aglio of DeIDOT identified the need to conduct field studies or trail user behavior monitoring
- Help perform trail intercept surveys
- Determine key areas for data collection
- Work with communities to address safety issues



TRAIL AMENITIES

- V. Coalition members are applying for grants to purchase trail amenities. Examples: Signage, Fix-it Stations, Bike Racks, Maps and Benches.
- **Launch a matching grant program for members to increase trail amenities added in the study area.**

MATCHING GRANT PROGRAM

Amenities must follow universal design principles and be accessible for all users. Below is an example of popular trail amenities, the list is not inclusive:

- Benches
- Picnic Tables
- Trash and Recycling Bins
- Public Art
- Kiosks
- Bike Fix-it Stations
- Water Bottle Filling Stations
- Bike Racks
- Bike Parking Shelters
- Signage (Wayfinding, Informational, Educational, etc.)

GENERAL REQUIREMENTS

- Grants **only** available to FTND Coalition members and supporters.
 - Amenity must be installed along an existing trail or trailhead within the FTND study area (map link).
- OR
- Enhance trail connections to/from a specific destination within the study area. (Example: Coalition Member Facility or other. Purpose of amenity would be to encourage use of trail to reach destination. Wayfinding, Kiosk, Bike Rack and other amenities would be considered)
 - Can be used to purchase a new amenity or repair existing.
 - Maximum request is \$2,500.
 - 50/50 match is required.
 - Requesting organization is responsible for installation and maintenance.
 - Landowner approval must be submitted with grant request.
 - Project must be completed including final grant report by October 31, 2021.

MATCHING GRANT APPLICATION

- Applications must be received prior to January 31, 2021.
- Matching grant funds must be confirmed at time of application.
- Grant decisions will be made by FTND Steering Committee in February 2021, awards will be distributed prior to March 15, 2021.

https://www.delawaregreenways.org/ftnd_trail-amenity-grant/

Grant Information & Application available at

Please direct any questions to Mary Roth at mroth@delawaregreenways.org

TRAIL PROJECT UPDATES - COMMONS BOULEVARD TRAIL MARCO BOYCE (NEW CASTLE COUNTY)

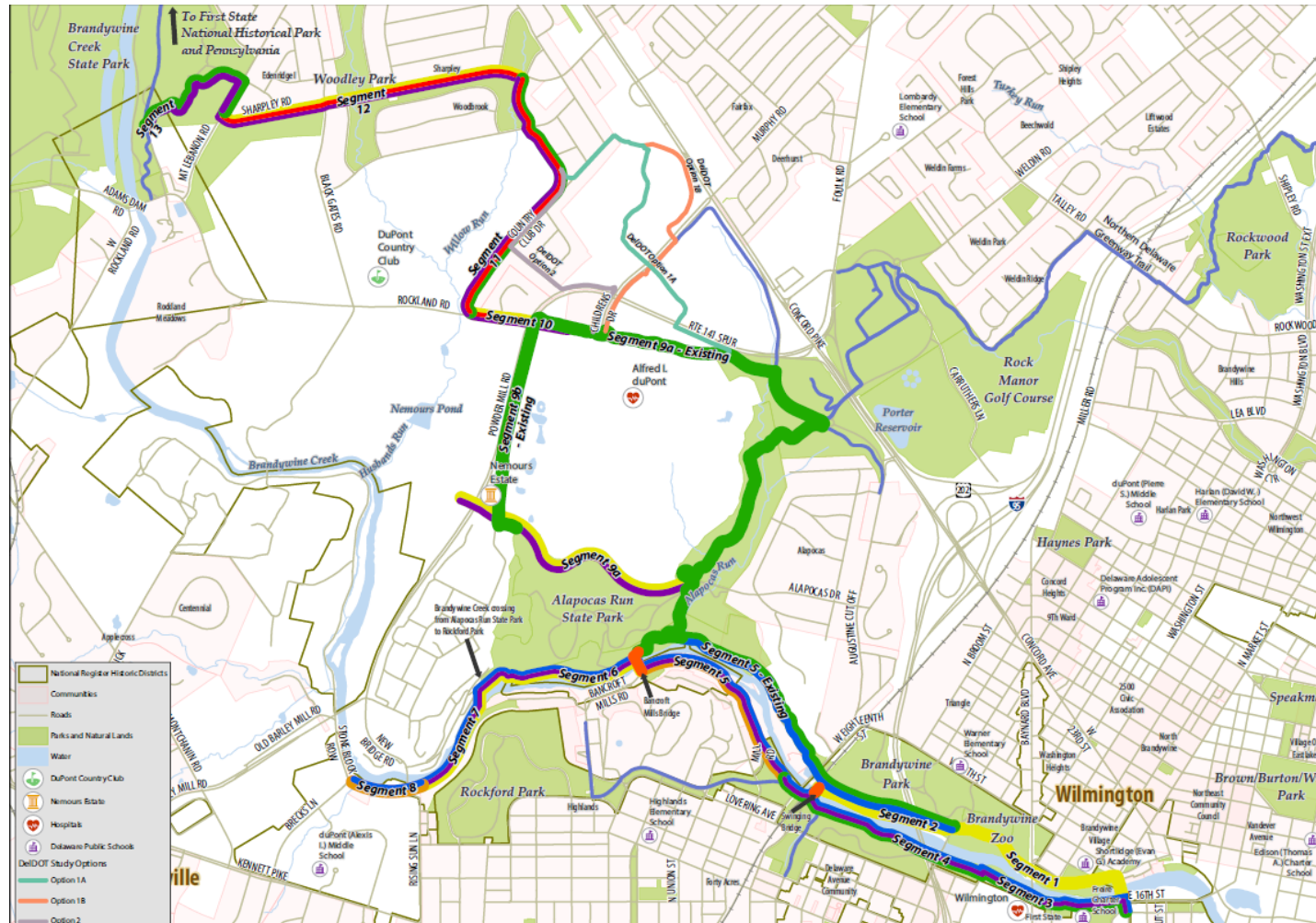


TRAIL PROJECT UPDATES - NEWPORT RIVER TRAIL

MARCO BOYCE (NEW CASTLE COUNTY)



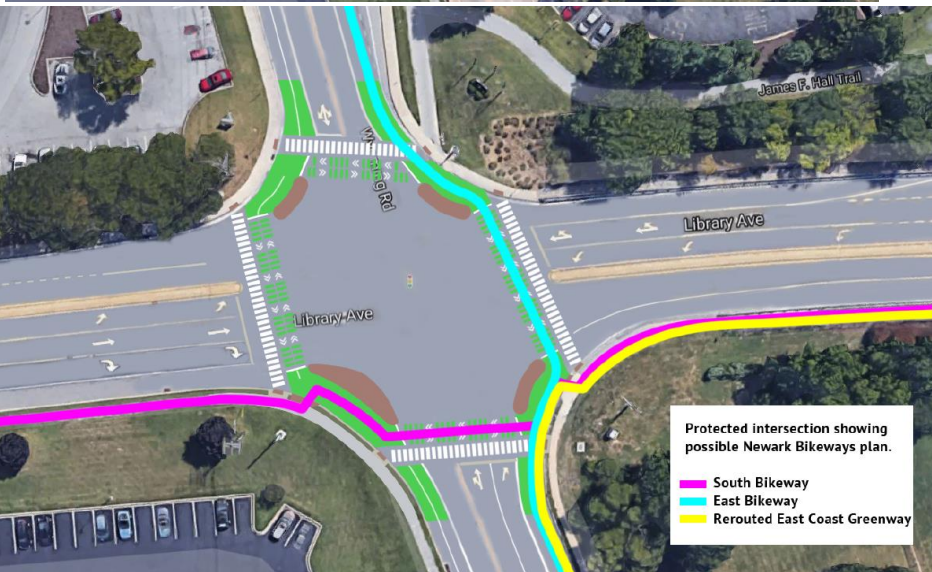
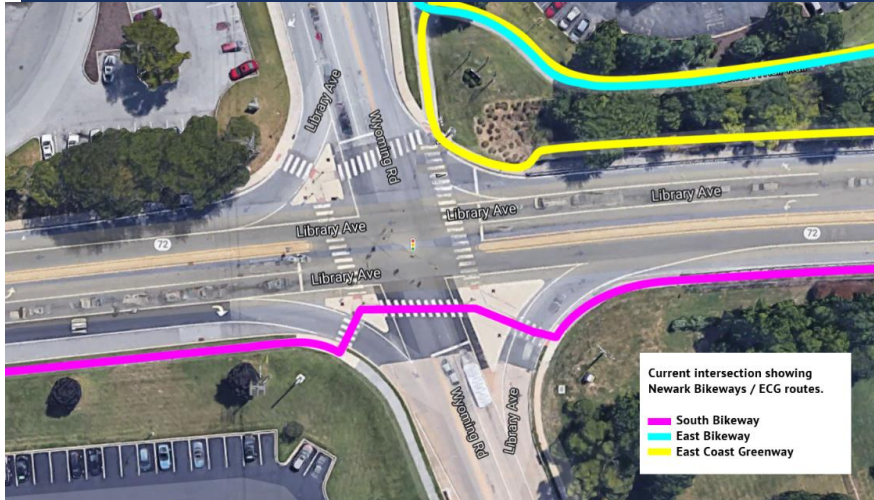
TRAIL PROJECT UPDATES - BRANDYWINE HERITAGE TRAIL ADAM CROSBY (DELAWARE GREENWAYS)



TRAIL PROJECT UPDATES – GOVERNOR PRINTZ BOULEVARD HEATHER DUNIGAN - WILMAPCO



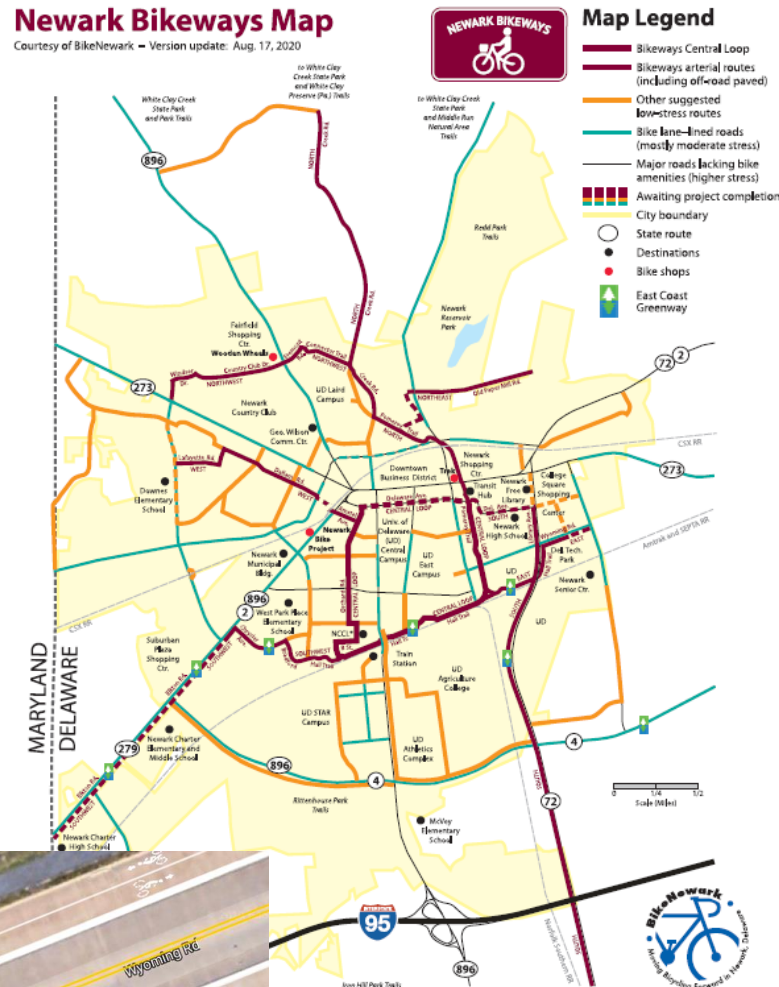
MEMBER AND SUPPORTER UPDATES



Mark Deshon
deshton@udel.edu

Newark Bikeways Map

Courtesy of BikeNewark - Version update: Aug. 17, 2020



MEMBER AND SUPPORTER UPDATES



REACH
Riverside

Kristin Barnekov-Short

kbarnekovshort@reachriverside.org



Character of Current Riverside Community. Photo taken April 2019 by Consultant Team.

RIVERSIDE MASTER PLAN

A PLAN FOR THE REVITALIZATION
OF THE RIVERSIDE COMMUNITY

November 2019

Project Partners:

Pennrose, Wilmington Housing Authority, Kingswood Community Center,
REACH Riverside, EastSide Charter School Of Wilmington, Inc.

Design Team:

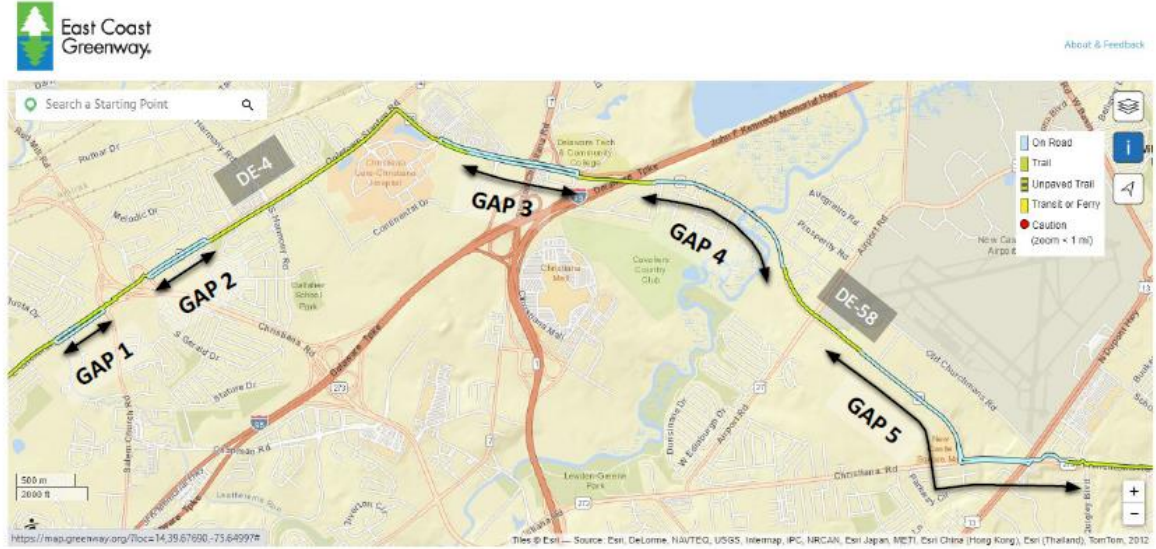
WRT, Architecture Alliance, VanDemark & Lynch, EDiS Company

PENROSE
Bricks & Mortar | Heart & Soul

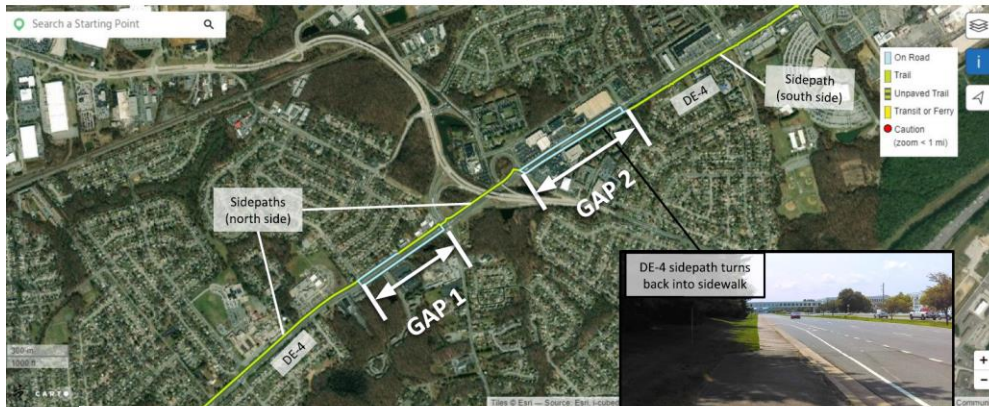


MEMBER AND SUPPORTER UPDATES

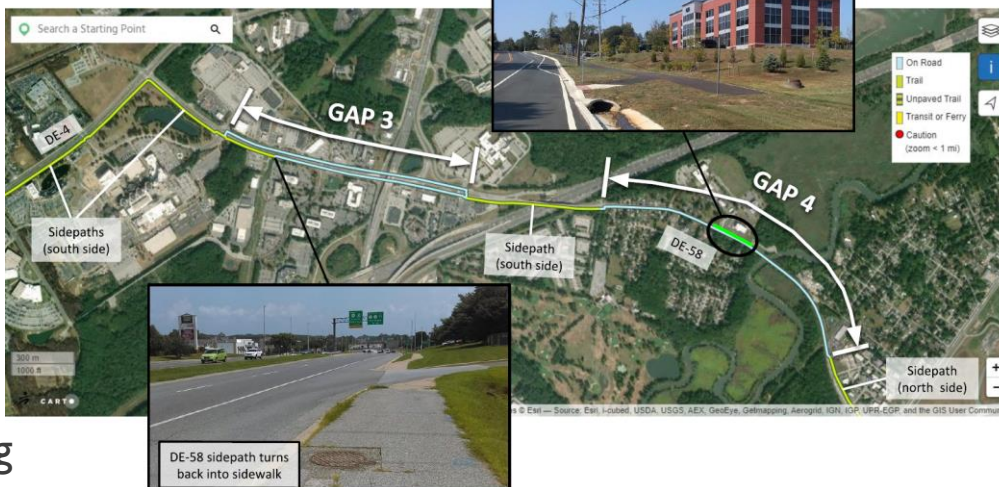
5 SIDEPATH GAPS: East Coast Greenway from Newark to New Castle



DE-4: GAPS 1, 2



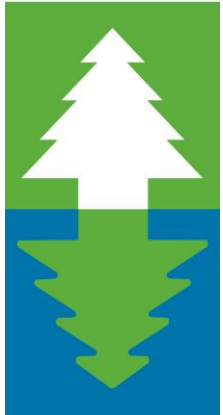
DE-58: GAPS 3, 4



DE-58/DE-273: GAP 5



East Coast



Greenway
ALLIANCE

Daniel Paschall

daniel@greenway.org

MEMBER AND SUPPORTER UPDATES

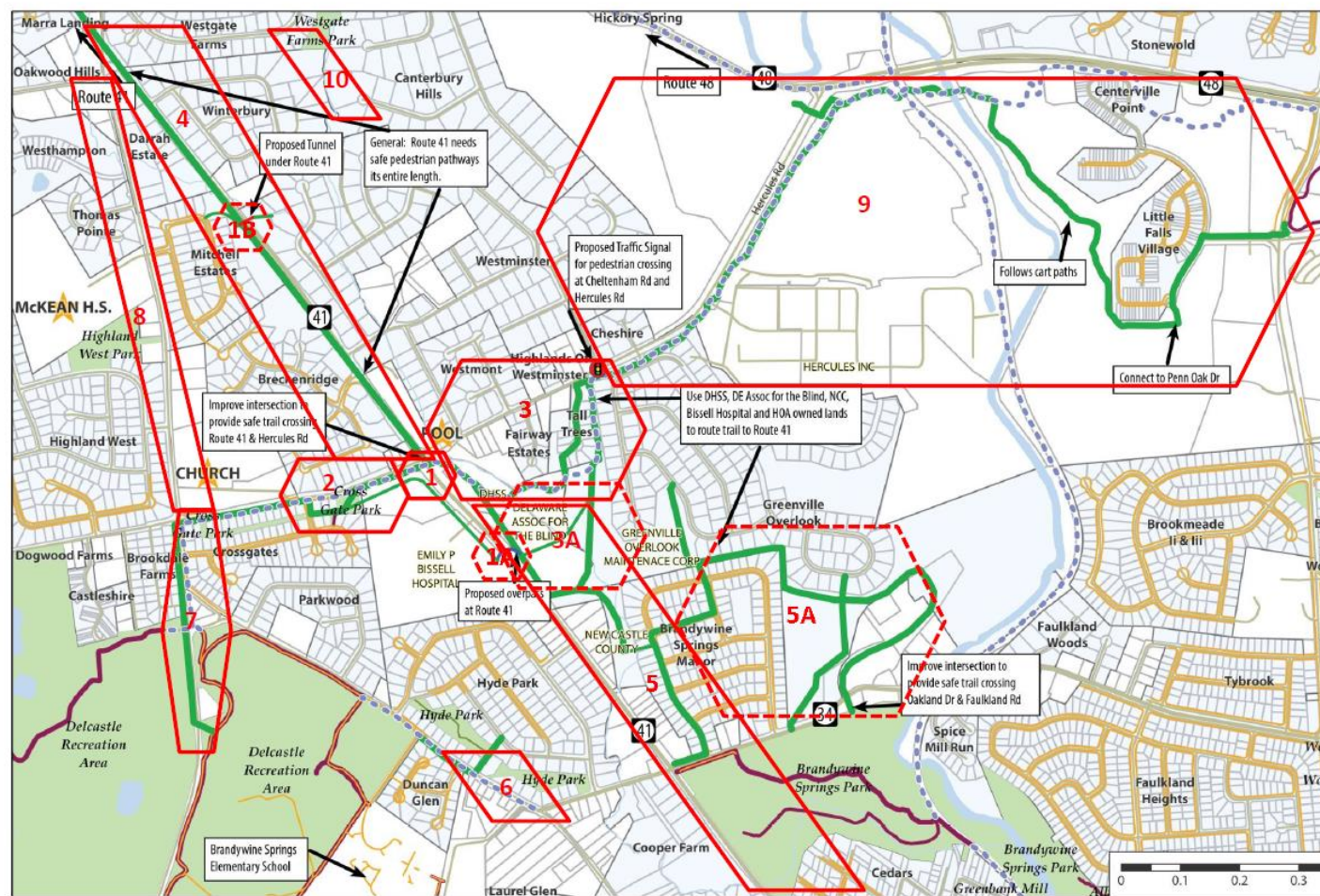


MILLCREEK NEIGHBORS
FOR SAFER PATHWAYS

Jennette Fennimore

millcreekneighborsde@gmail.com

Plan in 10 Sections



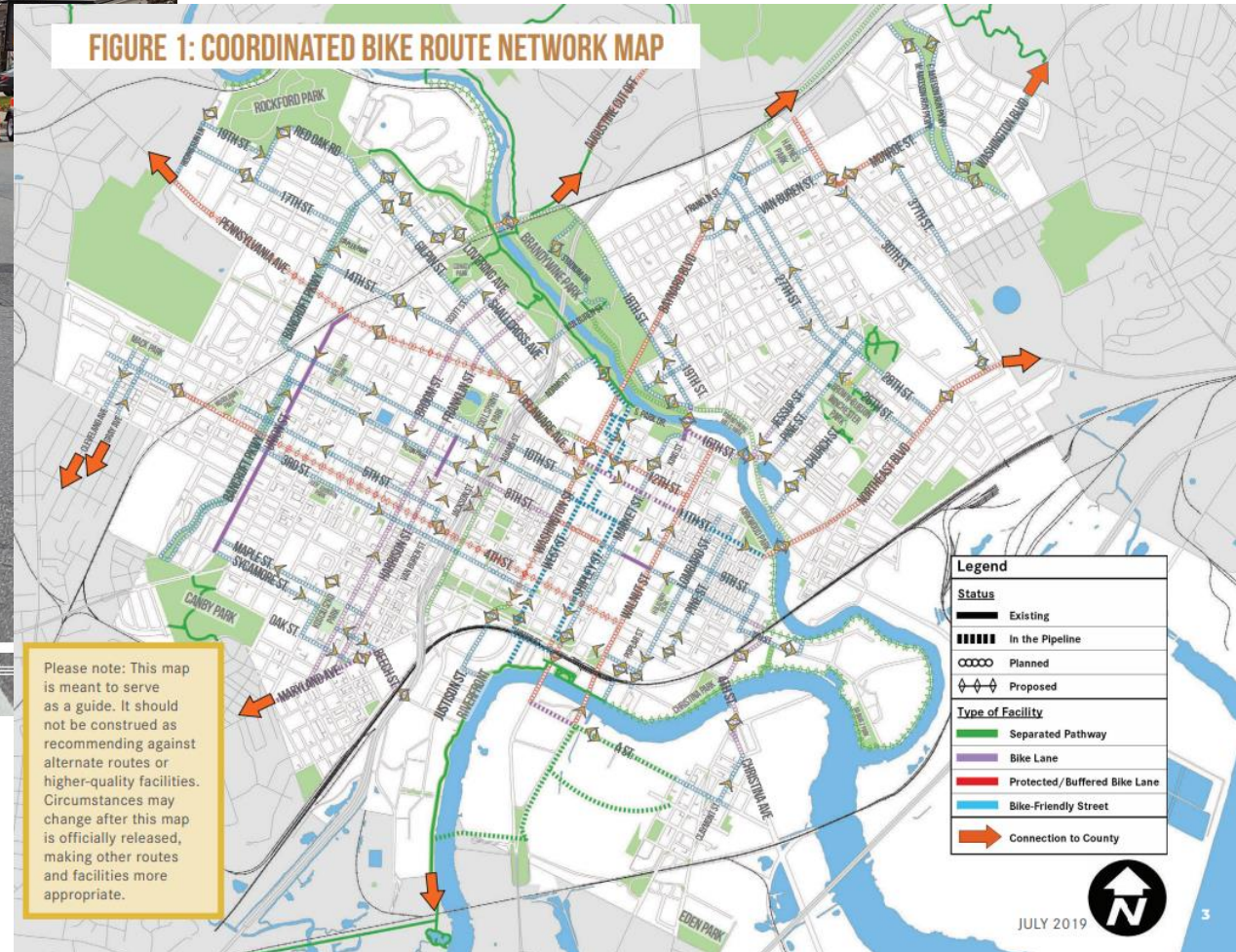
MEMBER AND SUPPORTER UPDATES



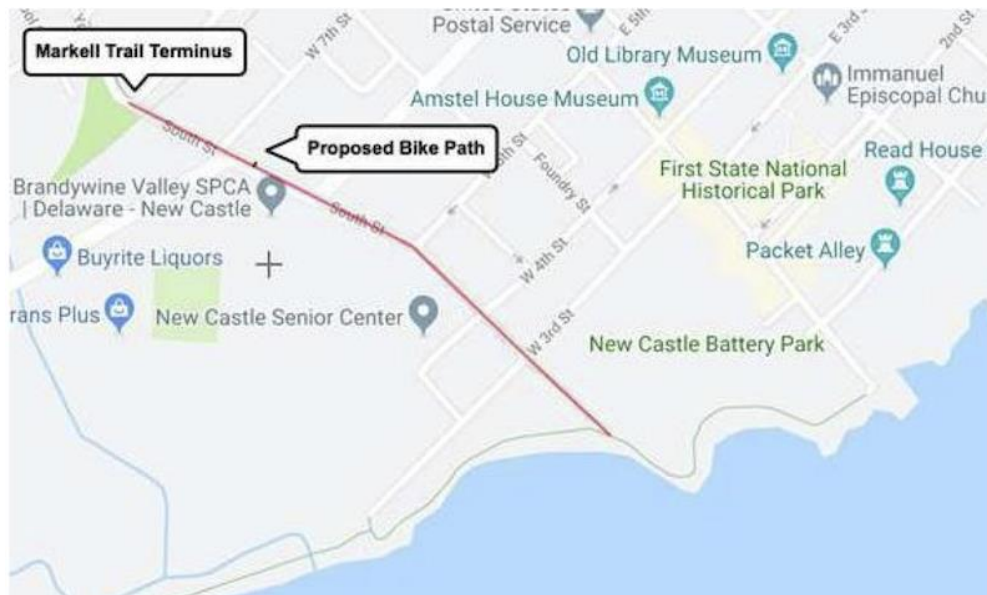
Matthew Harris

mharris@wilmingtonde.gov

FIGURE 1: COORDINATED BIKE ROUTE NETWORK MAP



MEMBER AND SUPPORTER UPDATES



James Wilson

james@bikede.org

<https://www.bikede.org/intersections/>

MEMBER AND SUPPORTER UPDATES



Bill Conley

firststateantiquearms@gmail.com

- 2021 events on W3R Delaware section of W3R National Trail
 - Our "Wreaths across America" ceremony on Dec 19, in Brandywine village, honoring Rev. War Delaware unsung hero Allen Maclain.
 - We have partnered with the Brandywine Village Partners Association for a series of 2021 events along the "Road to Yorktown."
 - The Village will be the W3R Delaware future, permanent HQ , as we move towards 2026

NEXT MEETING



Thursday, January 28, 2021

THANK YOU

Thank you all for participating!

If you have any questions please reach out

Adam Crosby

acrosby@delawaregreenways.org