

An aerial photograph of a city grid, showing a dense network of streets and buildings. A river flows through the center, and a major highway (I-95) is visible on the right side. The image is overlaid with a dark purple semi-transparent rectangle containing text.

# **BRIDGING I-95: CONNECTING THE COMMUNITY**

CAP FEASIBILITY STUDY  
COMMUNITY WORKSHOP #2  
19 APRIL 2022

An aerial photograph of a city grid, with a specific transit corridor highlighted in a dark, semi-transparent overlay. The corridor runs diagonally from the upper left towards the lower right, passing through a dense urban area. A river or canal is visible in the lower portion of the image. The overall image has a light, desaturated color palette.

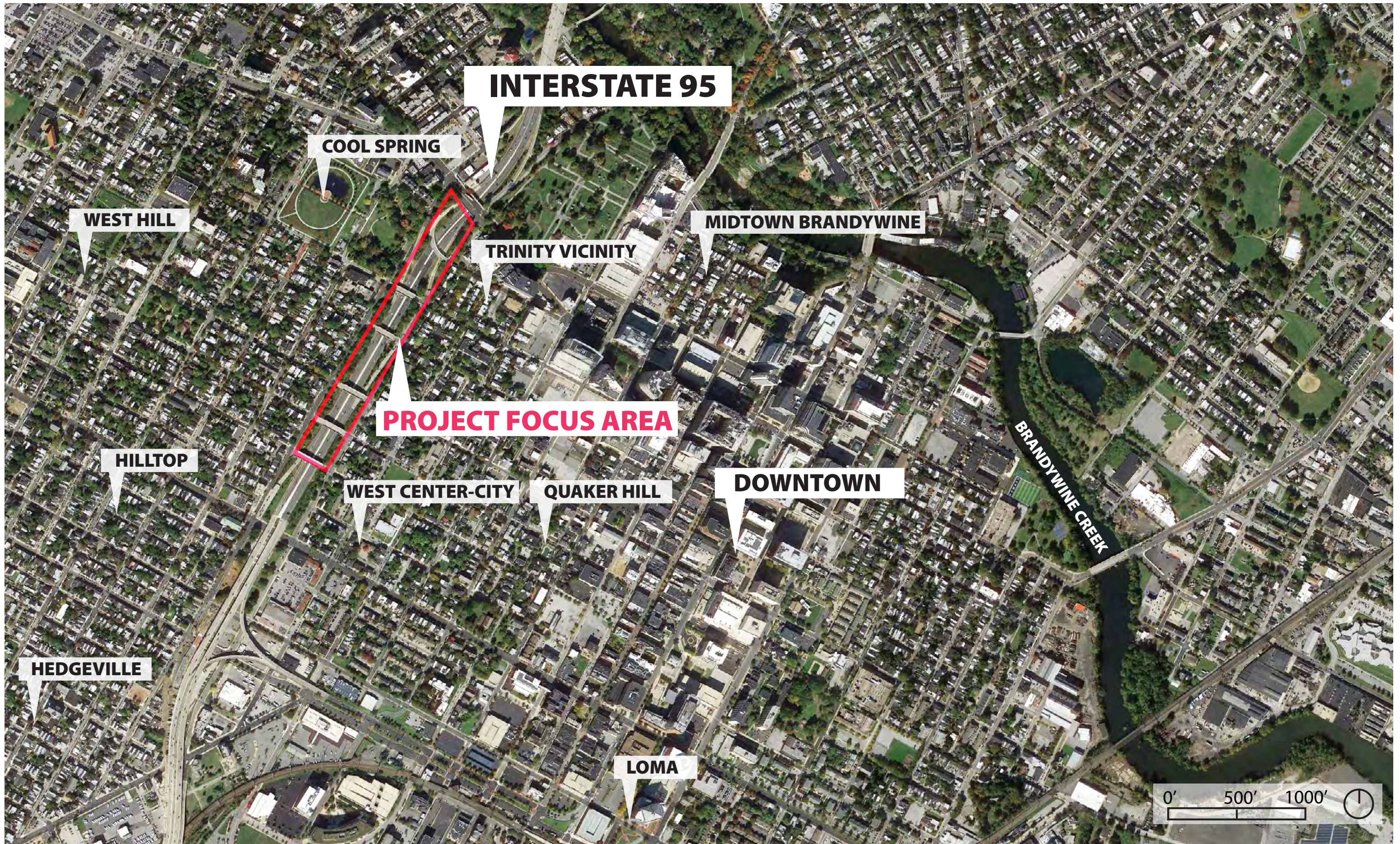
# AGENDA

- + Welcome
- + Presentation
  - + Where We Have Been
  - + Community Engagement Outcomes
  - + Project Considerations
  - + Project Goals
  - + Early Approaches
- + Discussion



# **I-95 FEASIBILITY STUDY**

*Where We have Been*







**I-95 FEASIBILITY STUDY**  
*Community Engagement*  
*Outcomes*

## What would make this project successful?

Write one word or phrase that describes your optimism

**Trip generator**

**Community restorations**

**Life and energy**

**Amenities for the neighborhoods**

**Improve air quality**

**Bring together different communities**

**A project appreciated by locals**

**Connections of people and places**

**Include those experiencing homelessness**

**Universally accessible**

**A place for teens**

## Let's talk about the the area.

### *What is working?*

***Local Artwork (Bridge murals)***

***Diversity***

***Community Gardens***

***Local Business and  
Entrepreneurship***

***Involved communities, leaders,  
and politicians***

### *What is not working?*

***Not enough public trash cans***

***Cars have more access and right  
of way than pedestrians***

***Lack of lighting***

***Localized Flooding***

***Not enough bike-able and  
walkable connections***



# Community Workshops #1 and #1B (November 17th 2021 & January 12th 2022)

## Let's make a vision for the future of I-95

*When I picture the future of this place, I envision...*

When picturing the future of this place, the community envisions **a place for everyone** that is **safe, walkable, and colorful**.

This includes **well-lit, well-maintained programmed areas** that prioritize **sustainability, native plantings**, places for families and community members to **play** and **exercise** comfortably, and that **celebrates the history of the neighborhoods**.



# Community Workshops #1 and #1B (November 17th 2021 & January 12th 2022)

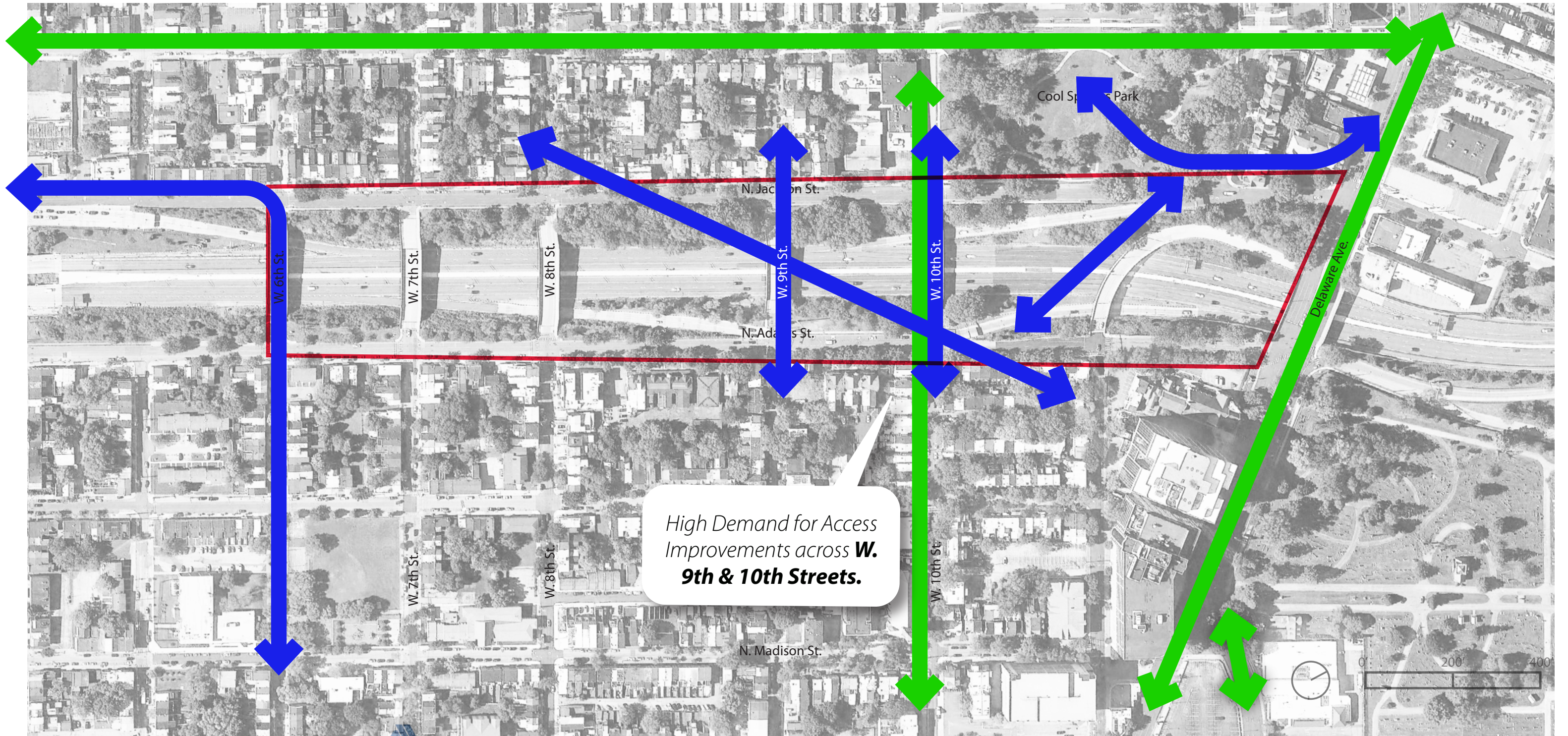
## Where do you walk or bike? Where would you walk or bike, if you could?

 I CURRENTLY WALK HERE

 I WANT TO WALK HERE

 I CURRENTLY BIKE HERE

 I WANT TO BIKE HERE



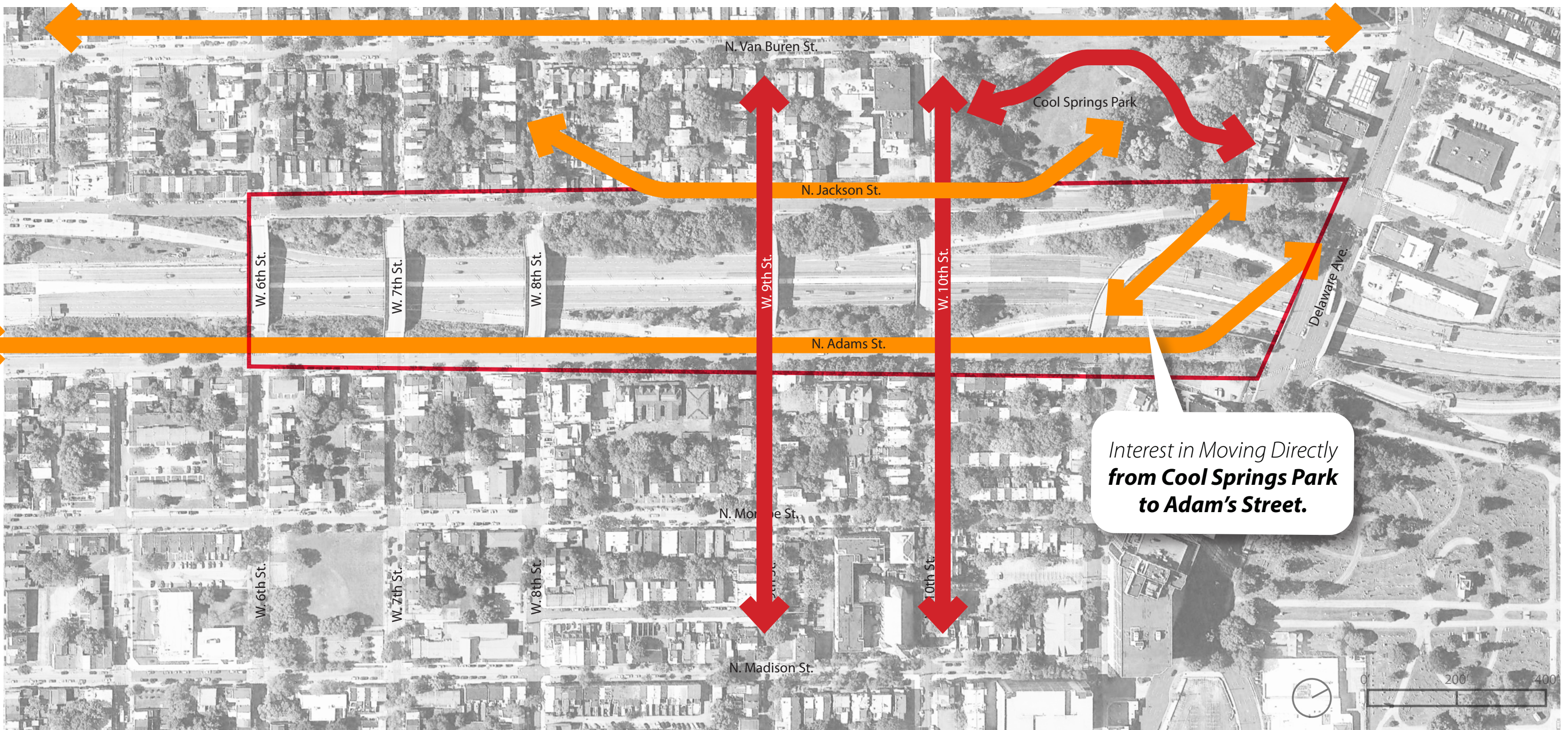
# Where do you walk or bike? Where would you walk or bike, if you could?

 I CURRENTLY WALK HERE

 I WANT TO WALK HERE

 I CURRENTLY BIKE HERE

 I WANT TO BIKE HERE



# Community Workshops #1 and #1B (November 17th 2021 & January 12th 2022)

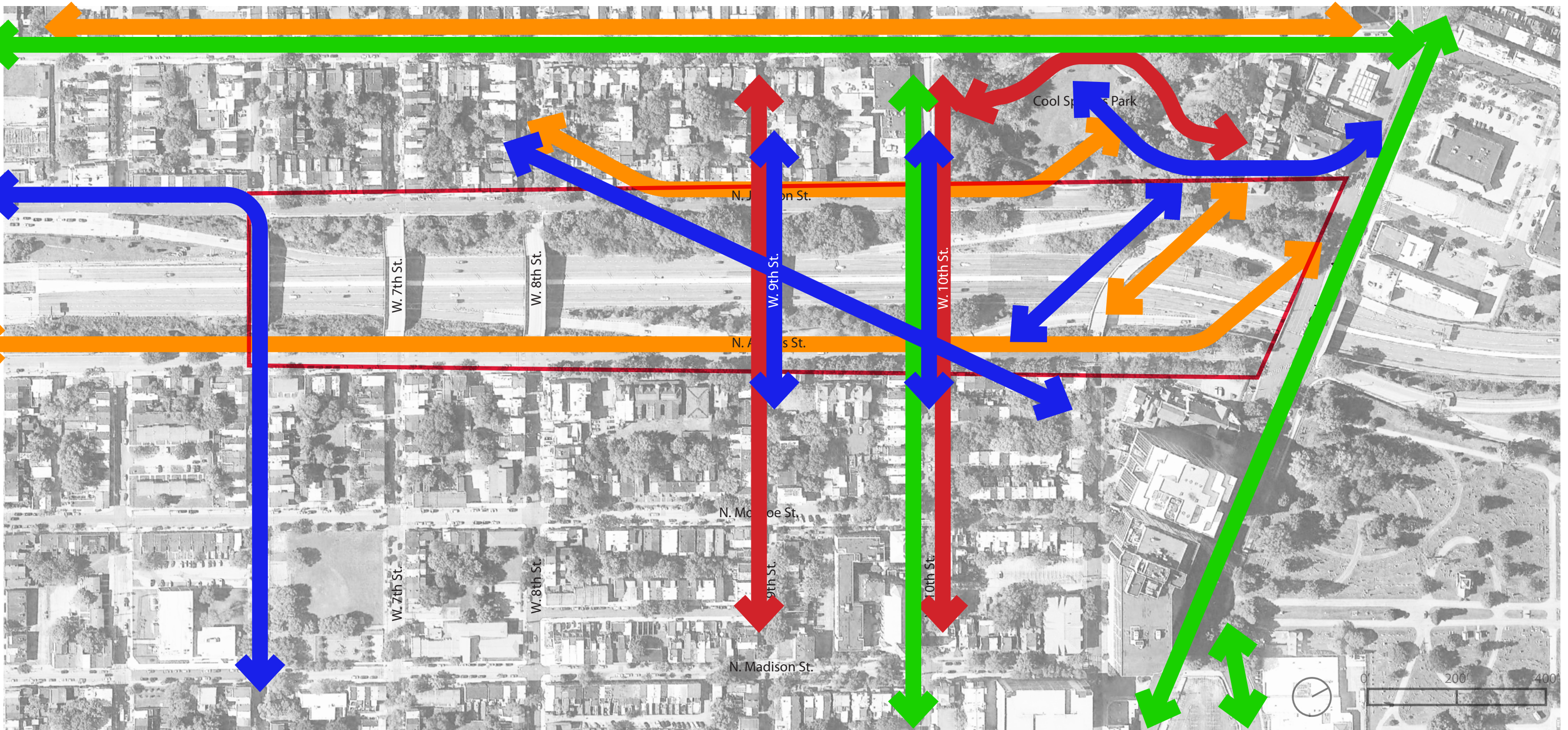
## Where do you walk or bike? Where would you walk or bike, if you could?

 I CURRENTLY WALK HERE

 I WANT TO WALK HERE

 I CURRENTLY BIKE HERE

 I WANT TO BIKE HERE



# PEDESTRIAN ONLY ZONES

SHADE TREES PUBLIC RESTROOMS

ACCESSIBILITY IMPROVEMENTS CONCESSIONS

TRAFFIC CALMING CAFE/MOVEABLE SEATING

ART AND SCULPTURE MULTI-FUNCTION LANDSCAPE

MARKET SPACE MURALS AND COLOR STORMWATER MANAGEMENT WAYFINDING

EXERCISE EQUIPMENT BIKE SHARE FITNESS CLASS SPACE IMPROVED CROSSWALKS

PROTECTED BIKE LANE BIRD HABITAT NATURE BASED ACTIVITIES

COMMUNITY GARDEN PICNIC AREAS INTERPRETATION/HISTORY

PERFORMANCE VENUE PLAYGROUND CONTEMPLATIVE SPACE

SKATEBOARDING COVERED EVENTS VENUE FLEXIBLE USE LAWN WINTER PROGRAM

PLACES TO SUNBATHE NIGHT PROGRAM SMALL GROUP SEATING POLLINATOR GARDEN  
RENTABLE PAVILION SPORT COURTS DOG PLAY AREA

CITY WATCHING

TRANSIT STOP CAR SHARE WINTER PROGRAM PLACES TO SUNBATHE BIKE SKILLS AREA

Not Favored:

RETAIL ON STREET PARKING CITY WATCHING RIDE-SHARE PICKUP POINT  
SKATEBOARDING COVERED EVENTS VENUE SPORT COURTS COMMUNITY GARDEN

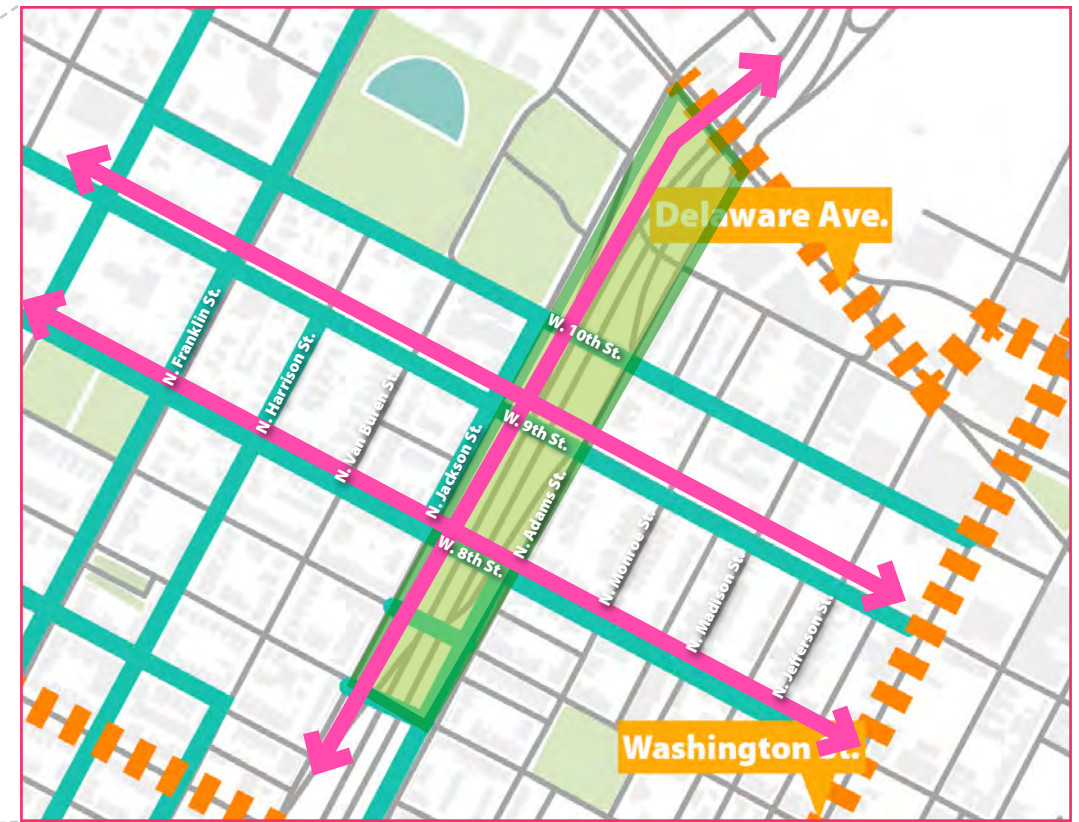
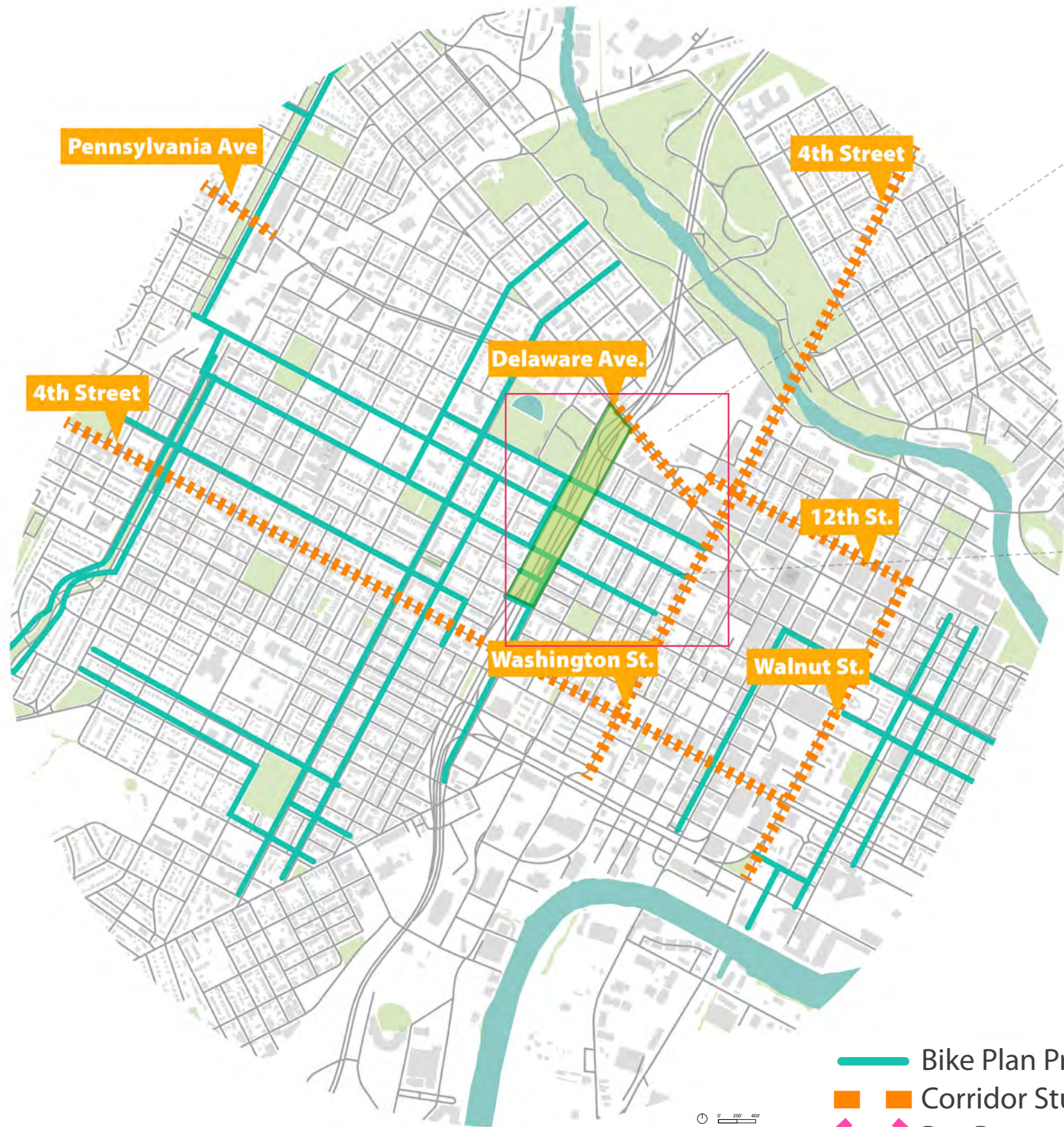
Favored



Not Favored

An aerial photograph of a city, likely Atlanta, Georgia, showing a dense urban landscape with a mix of residential and commercial buildings. A major highway, I-95, runs through the center of the image. To the left of the highway, a large stadium is visible. The text "I-95 FEASIBILITY STUDY" is overlaid in large, bold, white letters. Below it, the subtitle "Connecting to Existing Infrastructure" is written in a smaller, italicized white font.

**I-95 FEASIBILITY STUDY**  
*Connecting to Existing  
Infrastructure*



- Bike Plan Proposed Routes
- - - Corridor Studies
- ↔ Bus Route



City of Wilmington  
**BIKE PLAN**

August 2019 Report

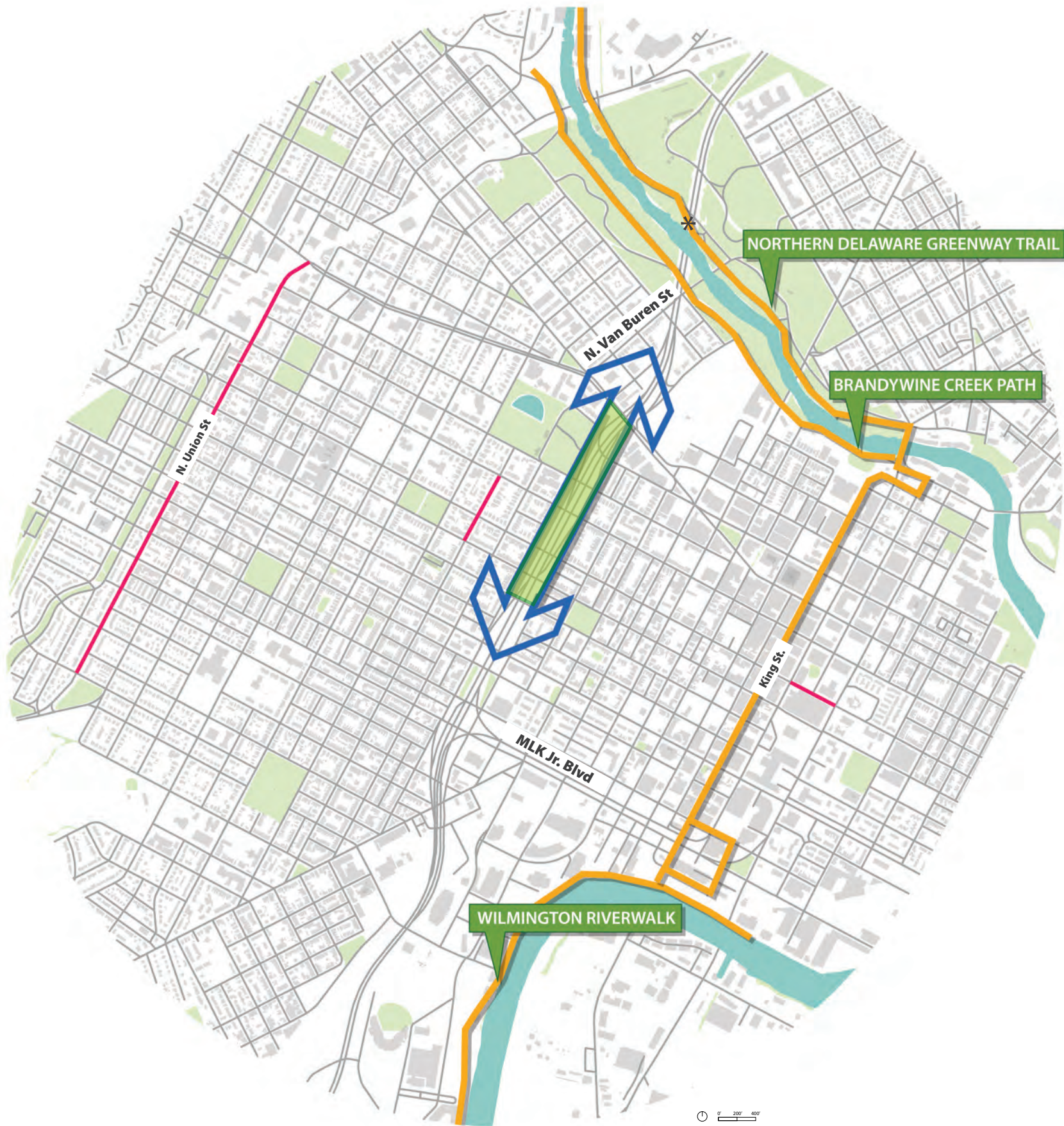
City Of Wilmington Bike Plan

# City Of Wilmington Bike Plan



I-95 CAP | APRIL 2022 ANALYSIS





Brandywine Creek Path

Image: TrailLink

- Existing Bike Trail
- Existing Bike Lane
- Bike Plan Proposed Routes
- Possible Bike Route Extension

## Brandywine to River Connections

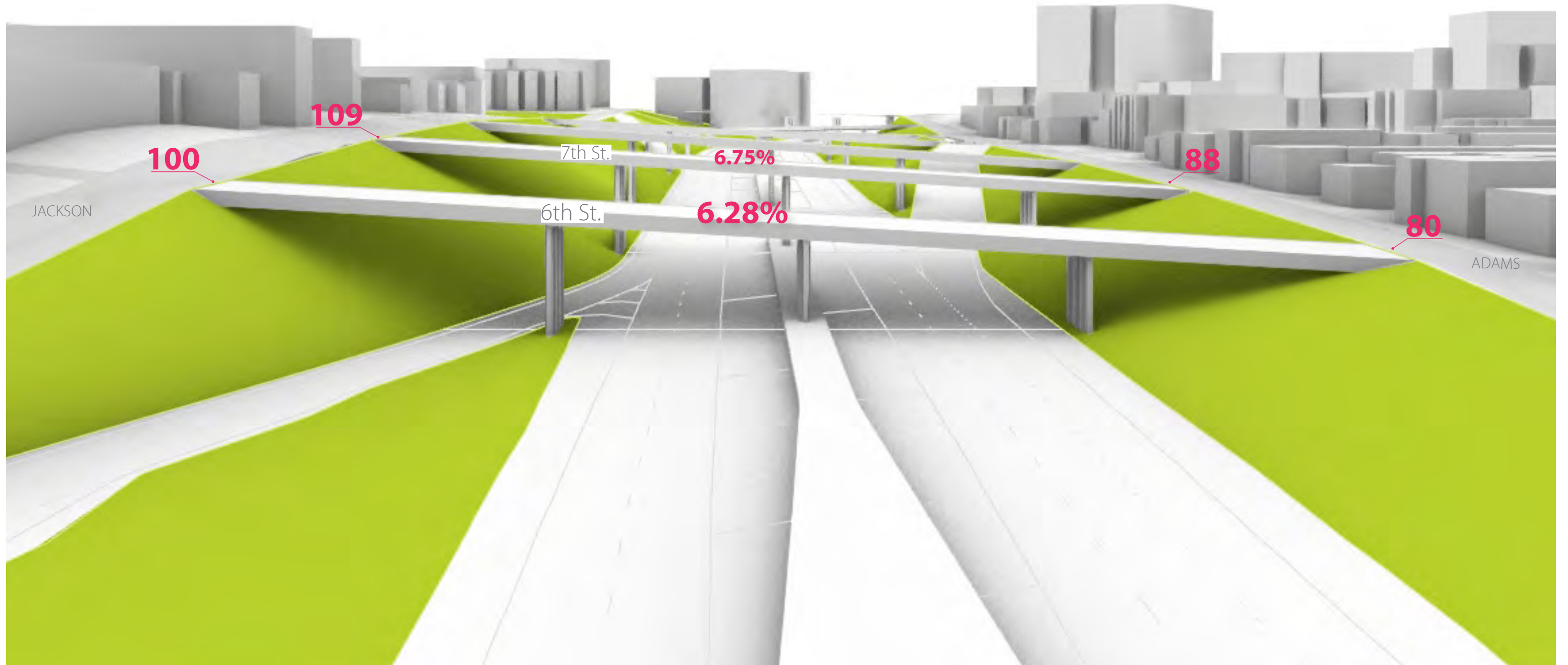


An aerial photograph of a city, likely Atlanta, Georgia, showing a dense urban landscape. A multi-lane highway (I-95) runs diagonally from the bottom left towards the top right. In the upper center, a large baseball field is visible, surrounded by trees and other buildings. The overall scene is a mix of residential, commercial, and institutional buildings, with a significant amount of greenery interspersed throughout. The image has a slightly desaturated, blue-tinted appearance.

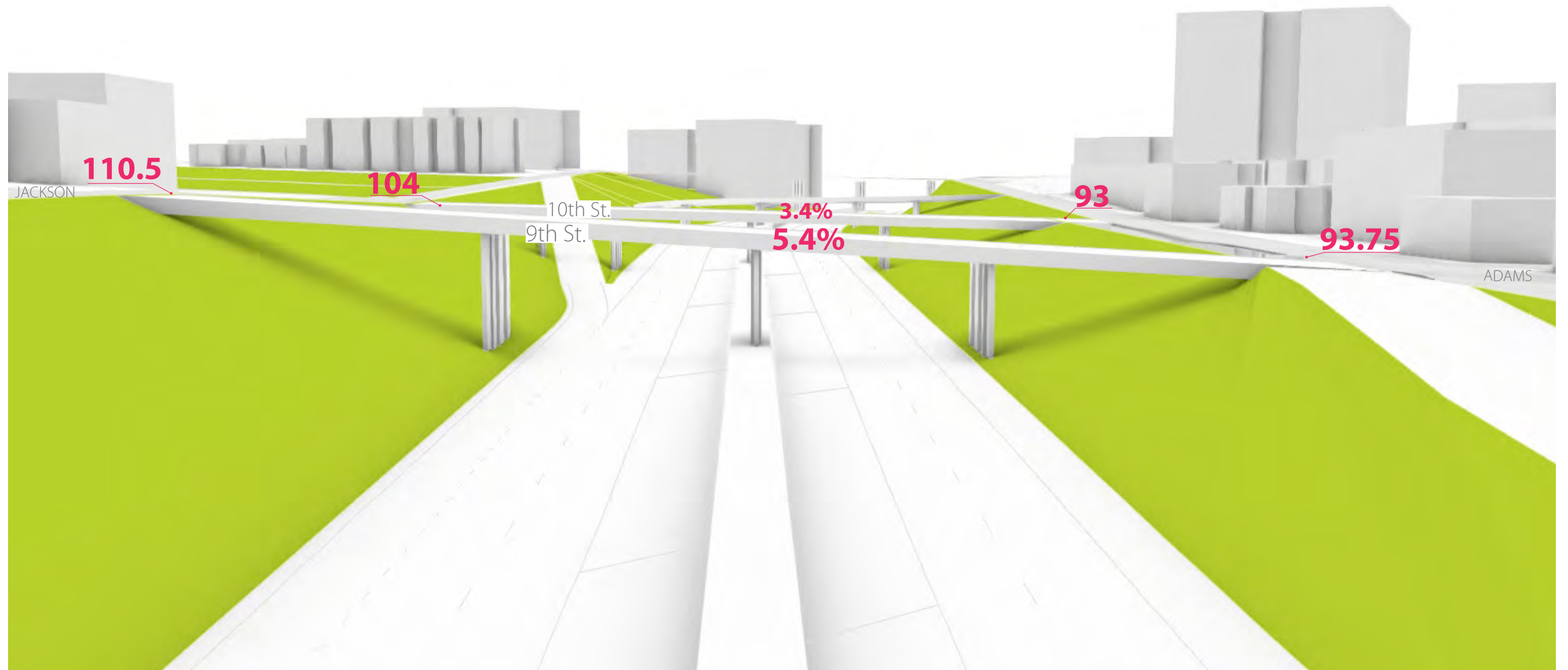
# **I-95 FEASIBILITY STUDY**

## ***DESIGN CONSIDERATIONS***

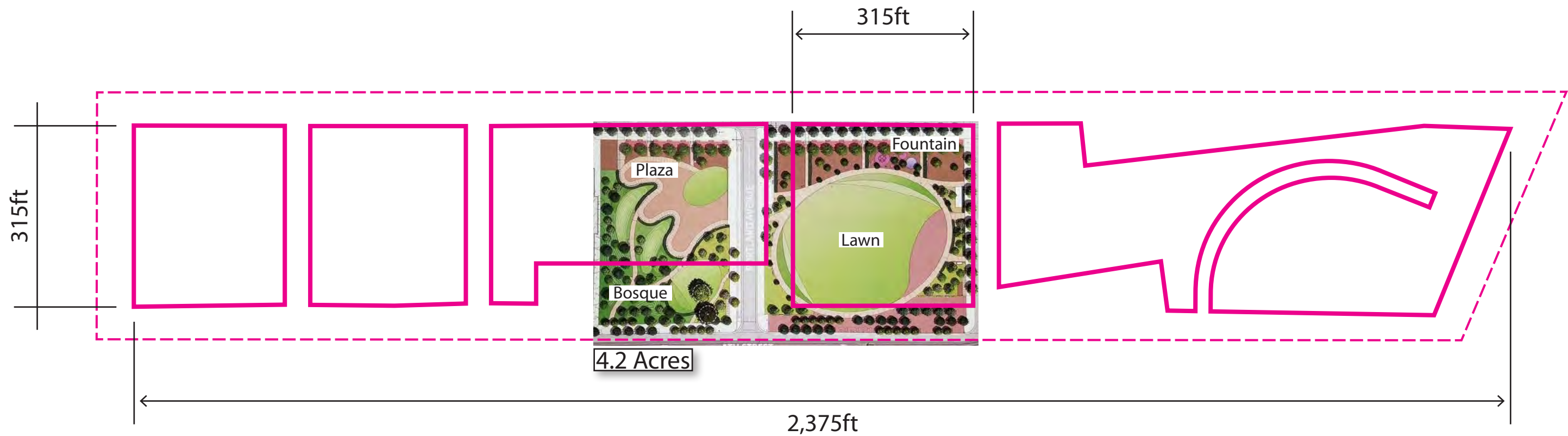
# SITE TOPOGRAPHY



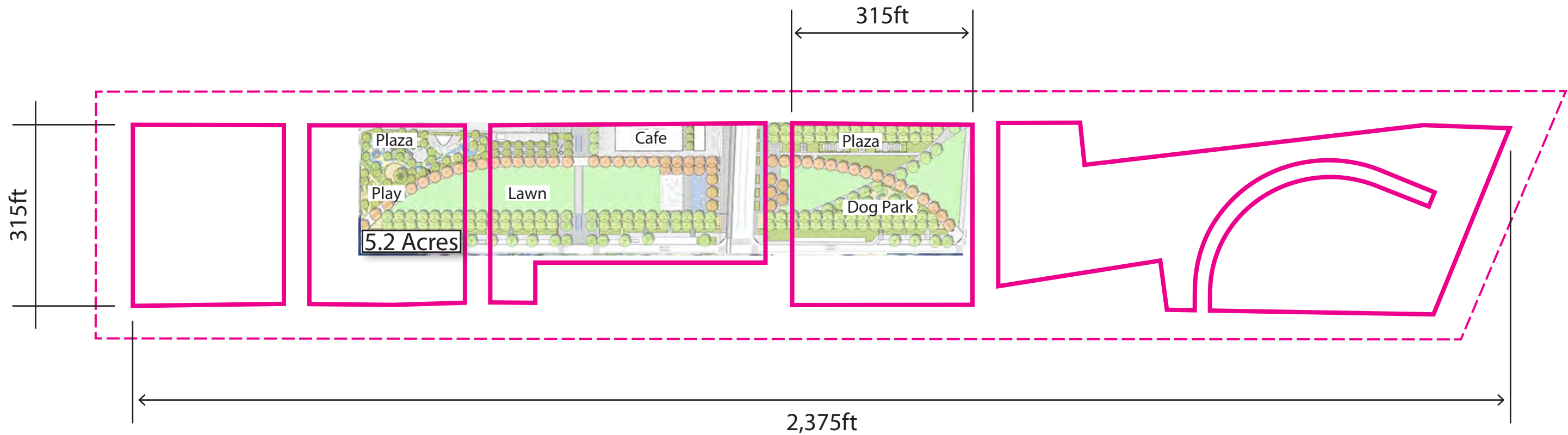
# SITE TOPOGRAPHY



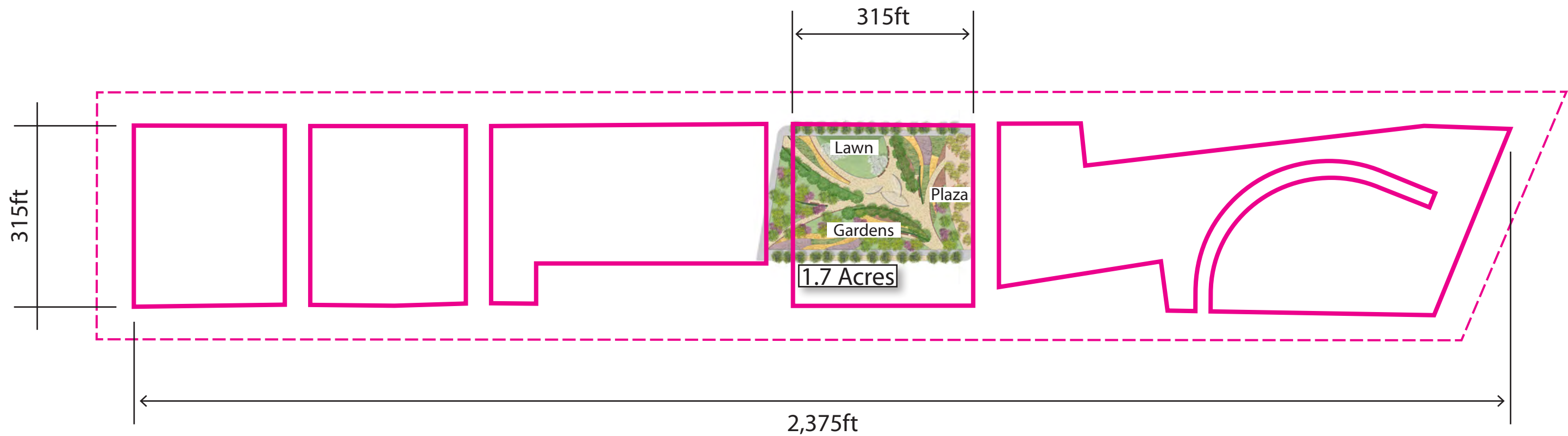
# SCALE COMPARISONS | The Commons, Minneapolis, MN



# SCALE COMPARISONS | Klyde Warren Park, Dallas, TX



# SCALE COMPARISONS | Civic Park, Dallas, TX





An aerial photograph of a city, likely Atlanta, Georgia, showing a dense urban landscape with a mix of residential and commercial buildings, trees, and a major highway (I-95) running through the center. A baseball field is visible in the upper left quadrant. The text "I-95 FEASIBILITY STUDY" is overlaid in large, bold, white capital letters, and "Project Goals" is overlaid in a smaller, white, italicized font below it.

# **I-95 FEASIBILITY STUDY**

## *Project Goals*



## PROJECT GOALS

**Reconnect** the neighborhoods divided by the construction of I-95 within the Jackson-Adams Corridor between the Delaware Avenue Bridge and the 6th Street Bridge.

**Support** neighborhood character, cohesion, and pride.

**Provide** equitable, safe, and connected access for pedestrians and people riding bicycles and using all modes of transportation.

**Create** inclusive, welcoming, vibrant public urban outdoor experiences through public realm & landscape amenities for residents of the adjacent neighborhoods.

### Parameters

---

- No commercial or residential relocations.
- Maintain an acceptable level of traffic flow through the project area balanced with a safe pedestrian oriented environment.
- No significant reconfiguration of I-95.

## PROJECT PURPOSE

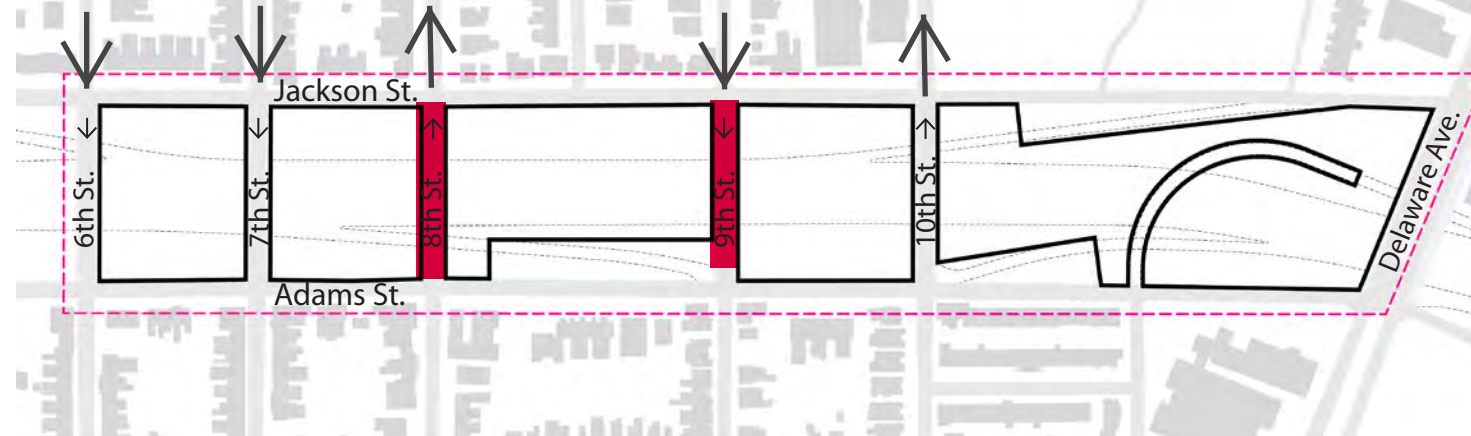
The purpose of this project is to mitigate the severed community connectivity between the neighborhoods adjacent to I-95 through **inclusive, vibrant public realm** and **landscape amenities** that celebrate neighborhood histories and to provide equitable and safe access to these new amenities through a **comfortable, safe, and connected multimodal network**.

## PROJECT NEED

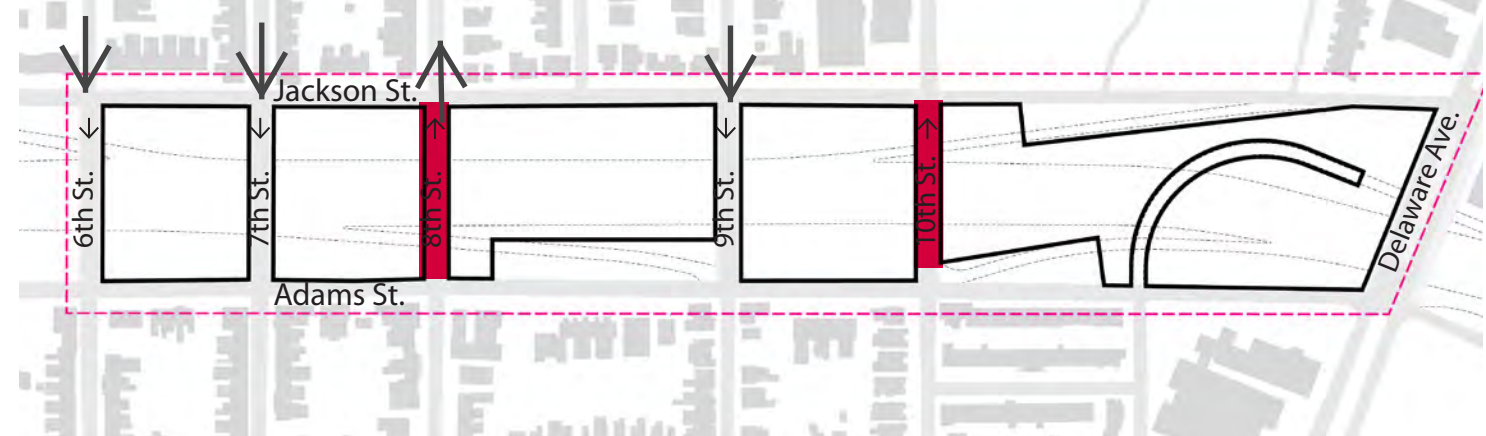
This project is needed to **offset the social and physical damage** caused by the initial construction of I-95 during the 1960's which **severed connectivity and cohesion** between communities adjacent to I-95 and created uncomfortable and **unsafe conditions** for people walking, biking, and traveling at night due to **inadequate multimodal access** between neighborhoods.

# UNDERSTANDING TRAFFIC CONDITIONS

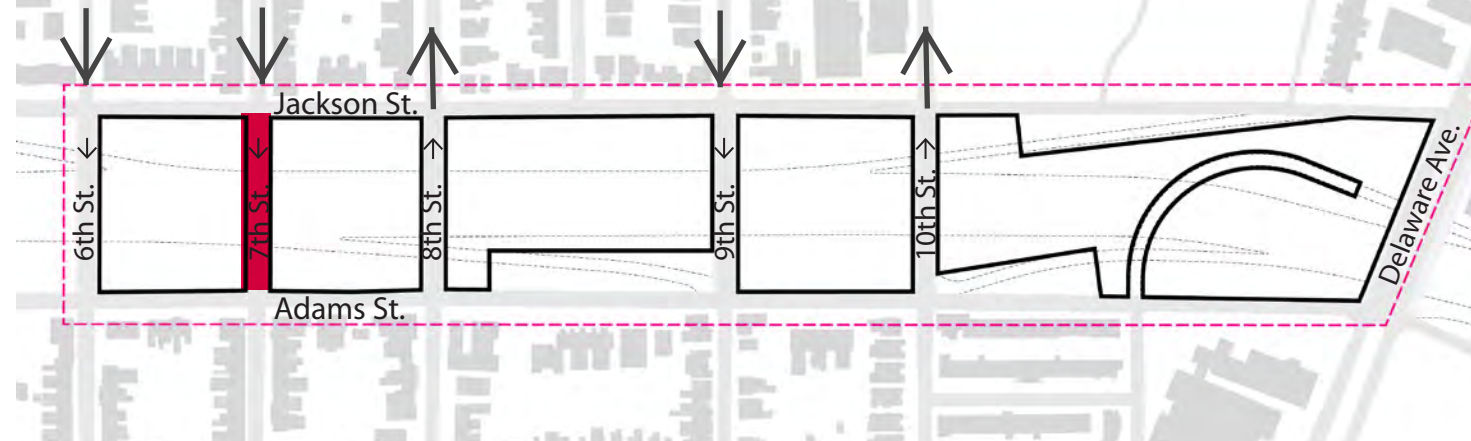
**Closing 8th and 9th Streets**



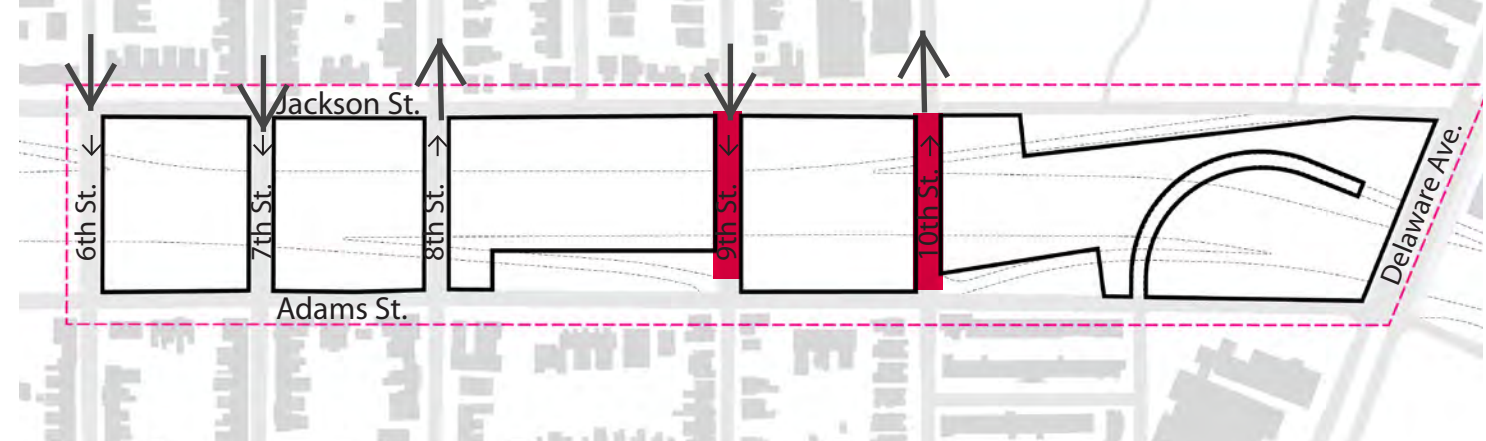
**Closing 8th and 10th Streets**



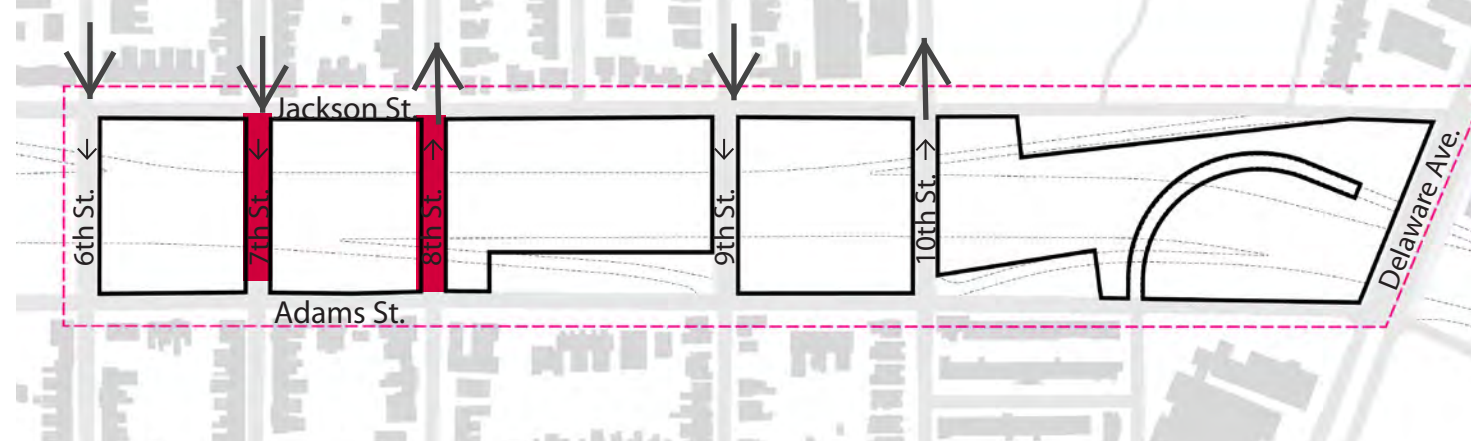
**Closing 7th Street**



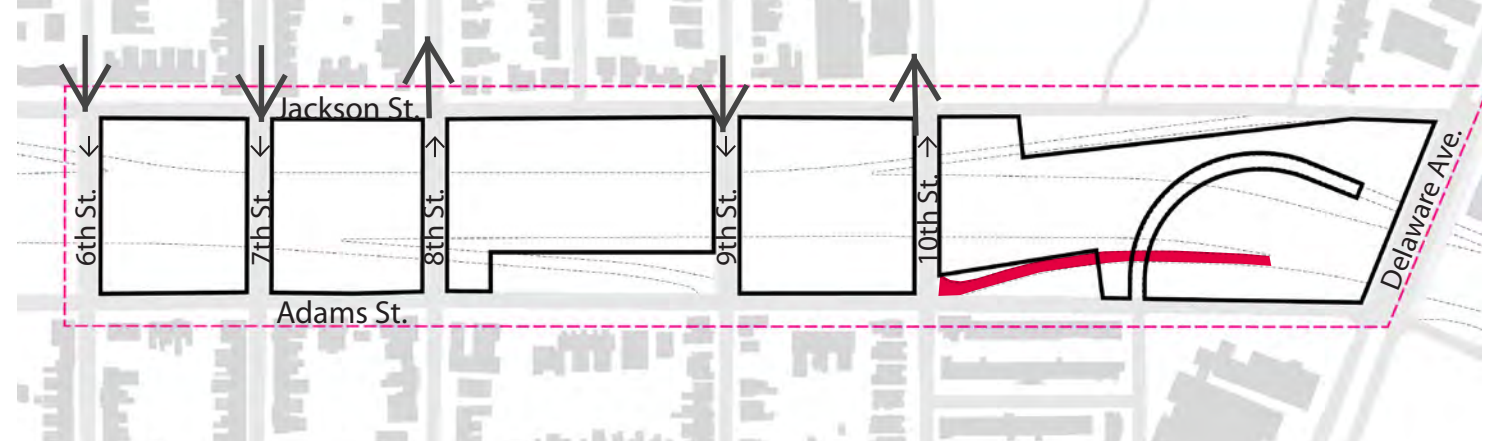
**Closing 9th and 10th Streets**



**Closing 7th and 8th Streets**



**Closing 10th Street On Ramp**



An aerial photograph of a city, likely Atlanta, Georgia, showing a dense urban landscape with a mix of residential and commercial buildings, trees, and a major highway (I-95) running through the center. A baseball field is visible in the upper left quadrant. The text 'I-95 FEASIBILITY STUDY' is overlaid in large, bold, white capital letters, and 'Early Approaches' is overlaid in a smaller, white, italicized font below it.

# **I-95 FEASIBILITY STUDY**

*Early Approaches*

# APPROACH 01 | OUTDOOR ROOMS



More Simple ←

→ More Complex

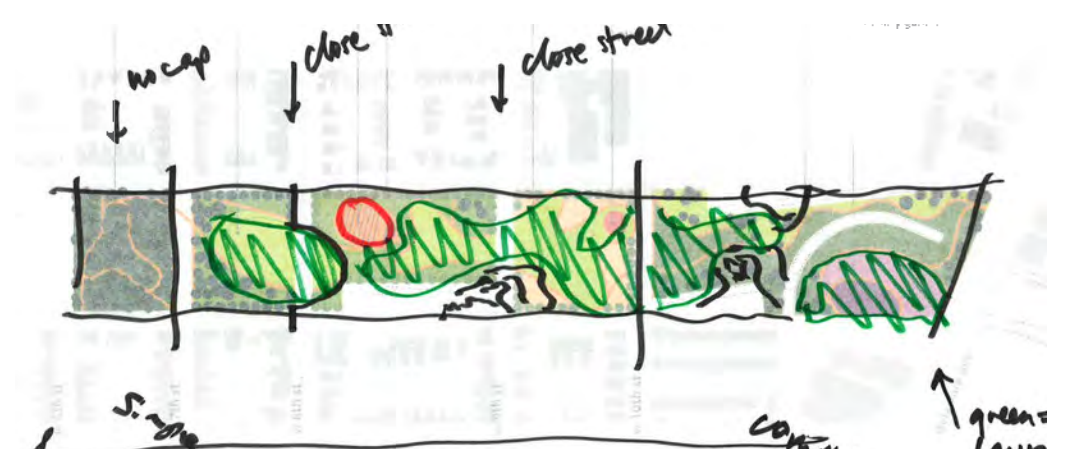
500ft



# APPROACH 01 | OUTDOOR ROOMS



# APPROACH 02 | GREENWAY



Cool Springs Park

Woods

Gardens

Gardens

Continuous Green

6th St.

7th St.

8th St.

9th St.

Jackson St.

Adams St.

10th St.

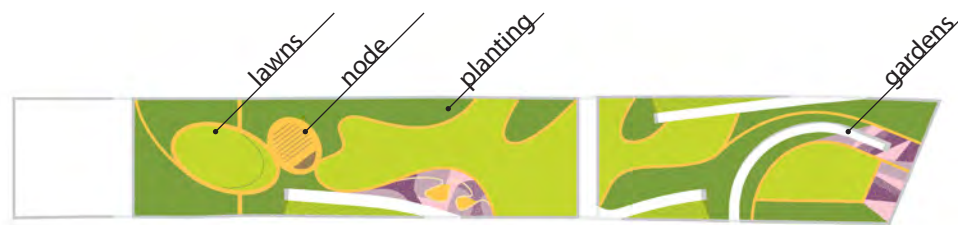
Delaware Ave.

500ft

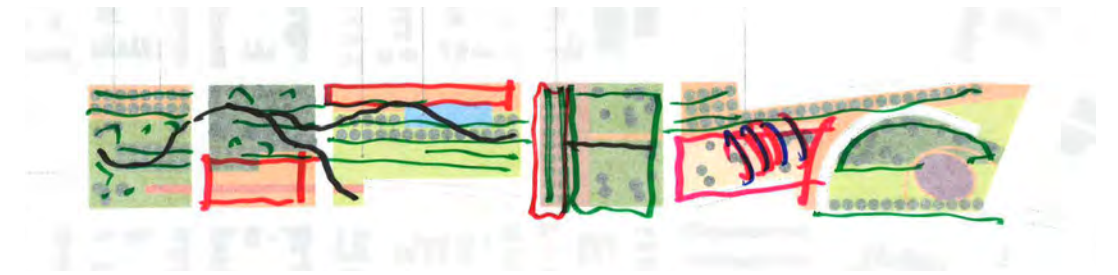




# APPROACH 02 | GREENWAY



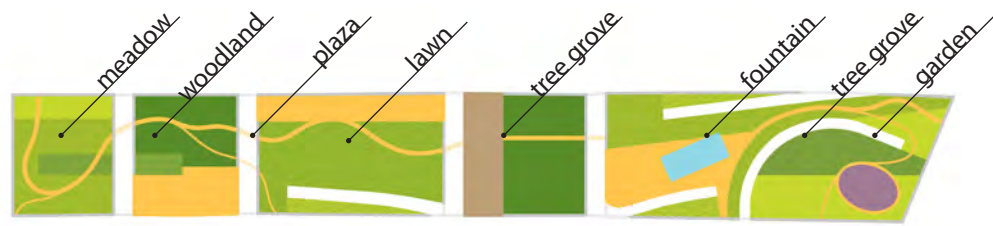
# APPROACH 03 | THE COMMONS



500ft



# APPROACH 03 | THE COMMONS



# Early Approach 1: Outdoor Rooms

*a series of distinct places*

- All Streets Remain Open
- Includes Development Site
- Closes 10th St. Ramp



# Early Approach 2: Greenway

*a contiguous public green*

- 8th and 9th Close to Cars
- Excludes 6th-7th Street Span



# Early Approach 03: The Commons

*a cohesive civic space*

- All Streets Remain Open
- All Approaches are Phaseable



# Advisory Committee Meeting #2 (March 08, 2022) | EARLY APPROACH FEEDBACK

## DISCUSSION TOPICS

### Elements The Ac Liked:

- Mission Of Uniting The City
- Approaches That Covered All Five Spans
- Open Green Space
- Flexible Street Design

### Possible Street Closures:

- 8th Street Emergency Access Route And Access To Downtown
- Parking Along Jackson And/Or Adams

### Other Discussion Topics:

- Traffic Calming
- Mid-Block Crossings
- Cost
- Phasing

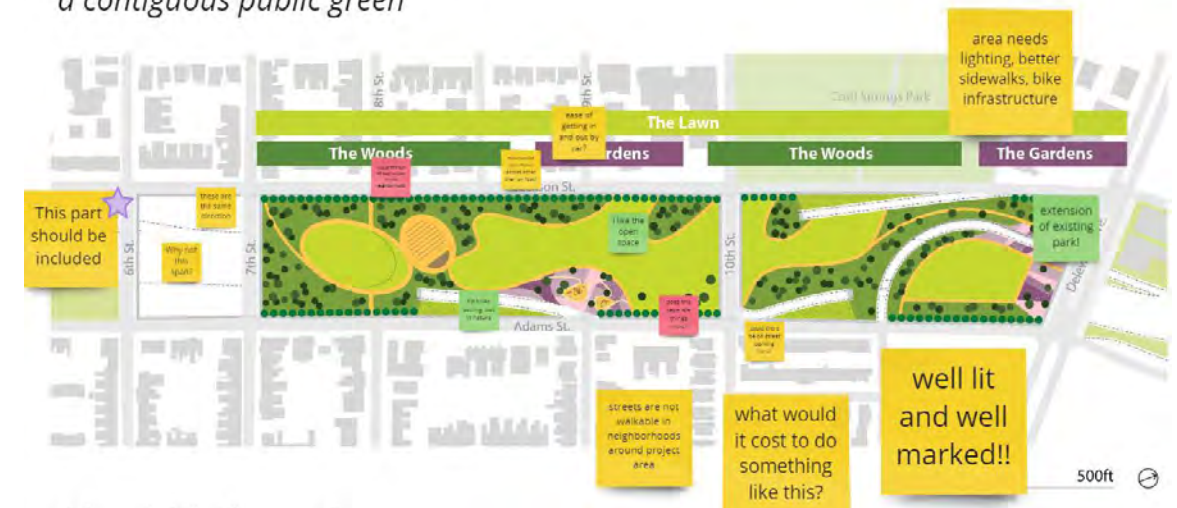
### Early Approach 01: Outdoor Rooms

a series of distinct places



### Early Approach 02: Greenway

a contiguous public green



### Early Approach 03: The Commons

a cohesive civic space



An aerial photograph of a city, likely Raleigh, North Carolina, showing a dense urban area with a mix of residential and commercial buildings. A major highway, I-95, runs diagonally through the center of the image. A large baseball field is visible in the upper left quadrant. The text "I-95 FEASIBILITY STUDY" and "NEXT STEPS & SCHEDULE" is overlaid in the center in a large, white, bold font.

# **I-95 FEASIBILITY STUDY**

## ***NEXT STEPS & SCHEDULE***

## NEXT STEPS

Refine Early Approaches into Concepts

Study Concept Feasibility

Targeted Community Outreach

- How can we better engage with more neighborhoods?
- What model of engagement would be most effective in your neighborhood?
- Where would it be most effective (grocery store, parks, etc)?



# TASK 1

COMMUNITY VISIONING

# TASK 2

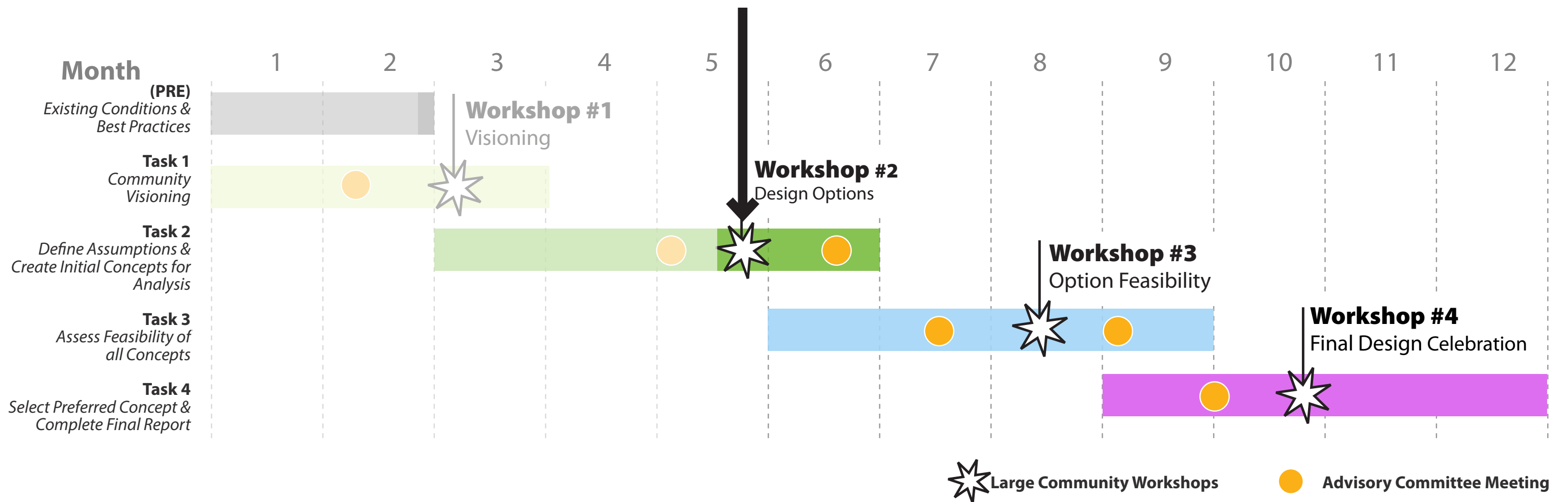
DEFINE ASSUMPTIONS AND  
CREATE INITIAL CONCEPTS FOR  
ANALYSIS

# TASK 3

ASSESS FEASIBILITY OF ALL  
CONCEPTS

# TASK 4

SELECT PREFERRED CONCEPT &  
COMPLETE FINAL REPORT





Please take our quick survey on the project website:

<http://www.wilmapco.org/i95cap/>

Questions or Comments? Please contact Dave Gula [dgula@wilmapco.org](mailto:dgula@wilmapco.org)

