

# **BRIDGING I-95: CONNECTING THE COMMUNITY**

CAP FEASIBILITY STUDY  
COMMUNITY WORKSHOP #1  
17 NOVEMBER 2021





## **AGENDA**

- + Team Introduction
- + Presentation
  - + Site History & Context
  - + Project Precedents
  - + Project Approach
  - + Preliminary Analysis
  - + Scope & Timeline
  - + Discussion
- + Mapping & Program Preferences
- + Questionnaire

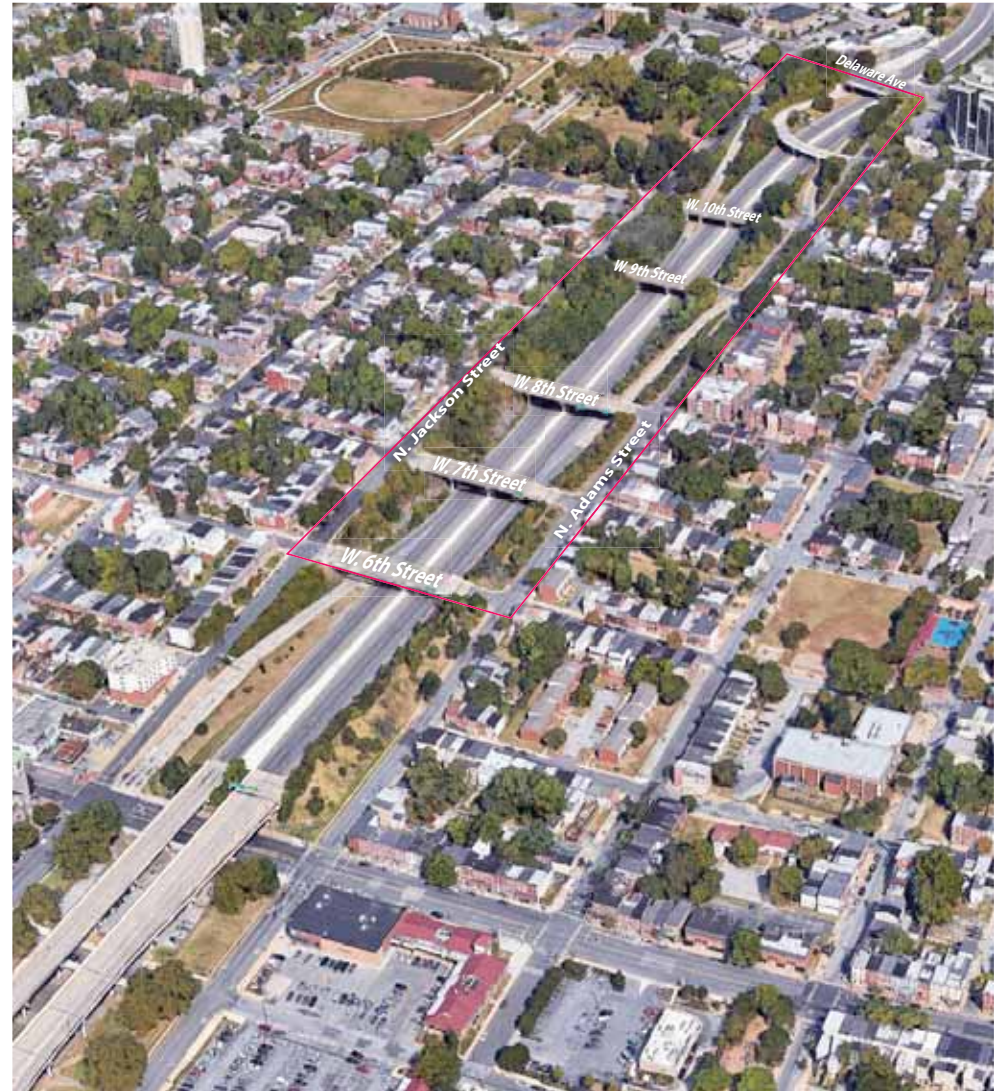


## ADVISORY COMMITTEE

- U.S. Senator Thomas Carper
- U.S. Senator Chris Coons
- U.S. Representative Lisa Blunt Rochester
- FHWA
- State Senators: Sarah McBride, Elizabeth Lockman, Darius Brown
- State Representatives: Gerald Brady, Nnamdi Chukwuocha, Sherry Dorsey Walker
- Delaware Transit Corporation (DTC)
- New Castle County
- City Council members: Michelle Harlee 4th, Bregetta Fields 5th, Nathan Field 8th
- Neighborhood Planning Council: 4th, 5th, 8th
- Downtown Visions
- United Neighbors
- Westside Grows Together
- Latin American Community Center
- BlindSight Delaware
- Bike Delaware
- West Center City Neighborhood Associations
- Westside Neighborhood Coalition
- Cool Spring/Tilton Park Neighborhood Coalition
- Trinity Vicinity Neighborhood Association
- Trinity Episcopal Church
- Hilltop Lutheran Church

## PROJECT TEAM

WILMAPCO  
DeIDOT/DTC  
City of Wilmington Administration



**PROJECT TEAM ORGANIZATION**

**CONSULTANT TEAM**

**Hargreaves Jones**

**PRIME / LANDSCAPE ARCHITECTURE**  
CAMBRIDGE, MA & NEW YORK CITY



**Mary Margaret Jones**  
Design Lead



**Kirt Rieder**  
Project Manager /  
Principal-in-Charge



**Aubrey Tyler**  
Job Captain / Designer

**MEETING FACILITATOR**



**Toyin Ogunfolaju**  
Jacobs Engineering

**JOHNSON, MIRMIRAN & THOMPSON (JMT)**

**ENGINEERING & MOBILITY**  
WILMINGTON, DE



**David DuPlessis**  
Principal-in-Charge



**Angie Hernandez**  
Project Manager



**Corey Hull**  
Structures  
Engineering  
Lead



**Greg Potens**  
Structures Engineer



**Brandon Talmadge**  
Structures Tech



**Joanna Arellano**  
Traffic Analysis



**Sean Lain**  
GIS Specialist



I-95 CAP | NOVEMBER 2021 **PROJECT TEAM**

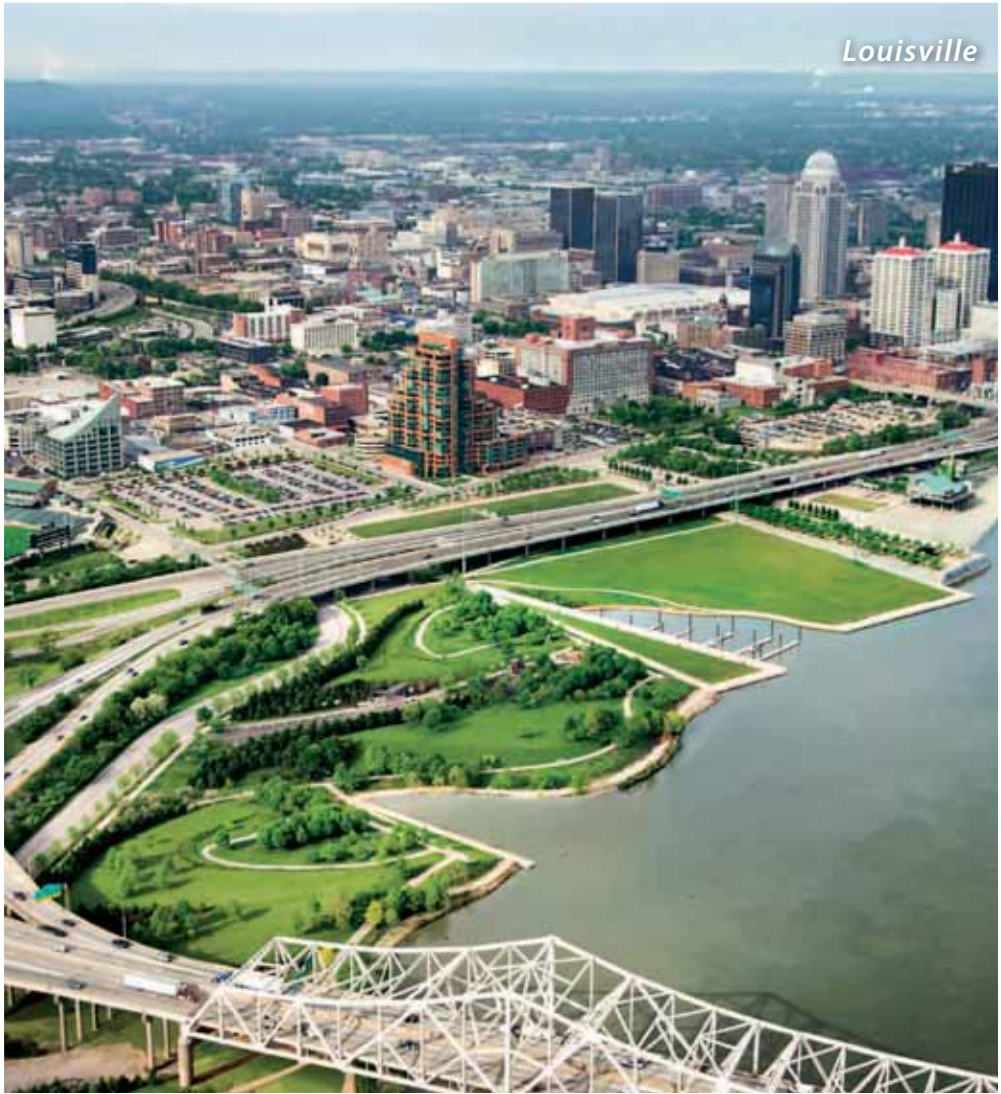


INTRODUCTION TO HARGREAVES JONES





INTRODUCTION TO HARGREAVES JONES





INTRODUCTION TO JMT



Baltimore



Wilmington



New Castle

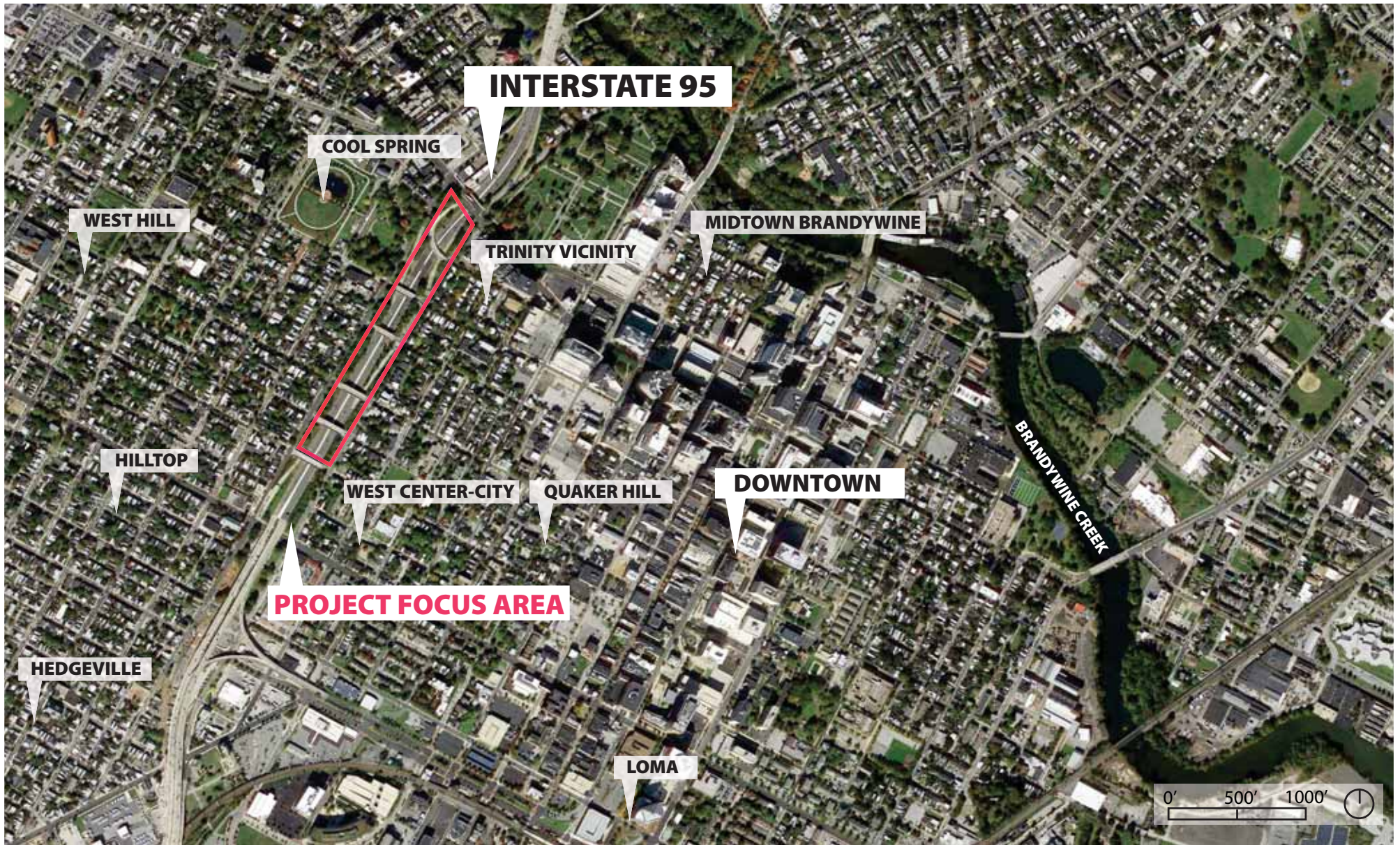




# **I-95 FEASIBILITY STUDY**

## ***PROJECT CONTEXT***





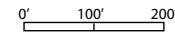


"It really did devastate our community [...] It was people who you grew up with who you no longer saw. You had no idea where they moved to."

-Caren Turner West Center City Resident  
(delawarepublic.org)



Companion Source: Delaware Historical Society: *Building I-95: A Community Divided*



■ 1911 Building Footprints  
— Project Boundary



**1927:** Dense Neighborhood Fabric



HAGLEY MUSEUM DIGITAL ARCHIVE

**1957:** Illustrative Plan



BUILDING I-95: A COMMUNITY DIVIDED / DELAWARE PUBLIC ARCHIVES

**1959:** Planning I-95



DELDOT DIGITAL ARCHIVES



**1954:** Residential Neighborhood Fabric **1968:** A Divided Neighborhood



FIRSTMAP DELAWARE



FIRSTMAP DELAWARE

**1997:** Density Changes



GOOGLE

**Present:** An Opportunity to Unite



GOOGLE







# **I-95 FEASIBILITY STUDY** *PROJECT PRECEDENTS*







PRECEDENT: PARKS OVER HIGHWAYS



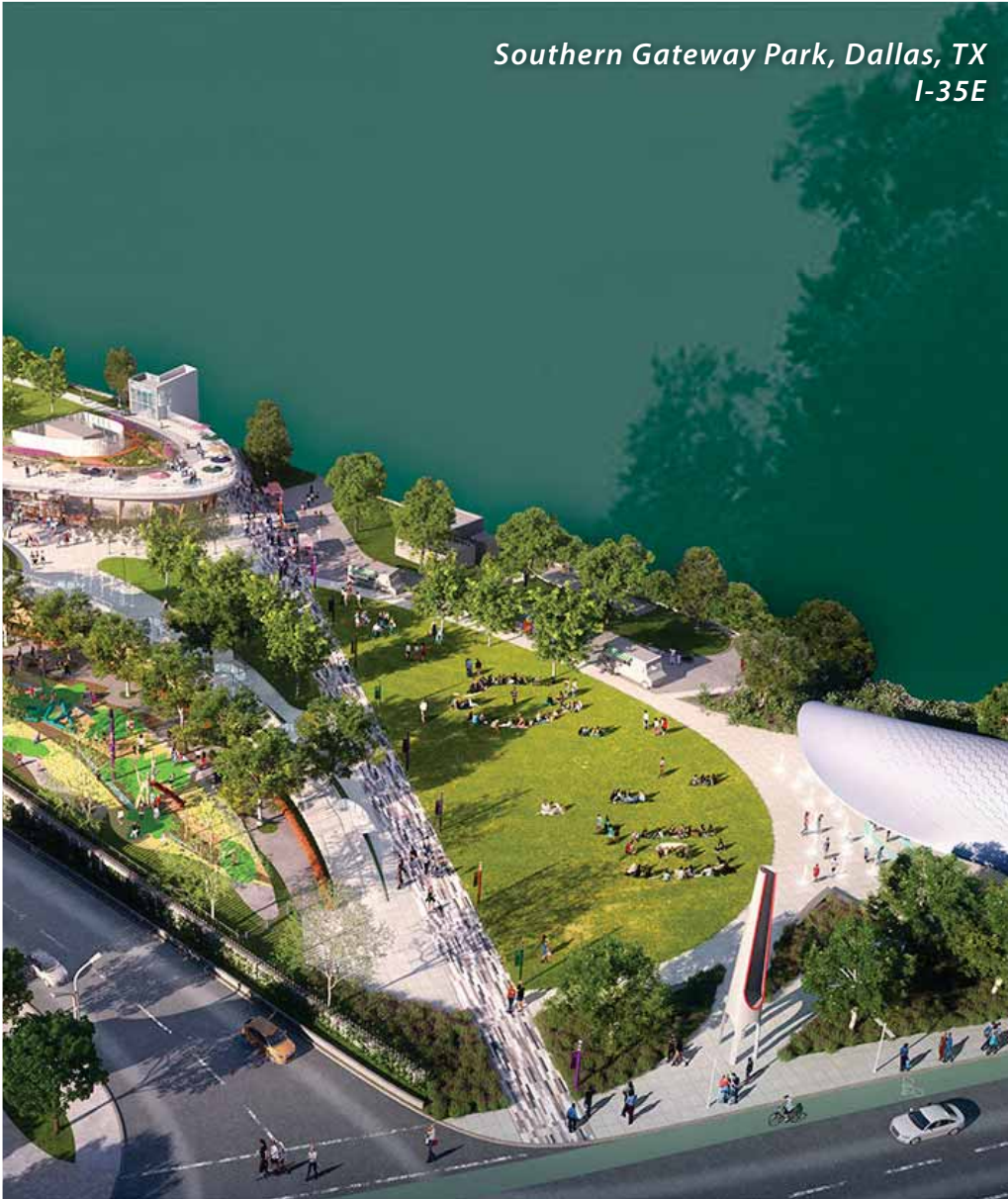
*Kanawha Plaza, Richmond, VA  
I-195*



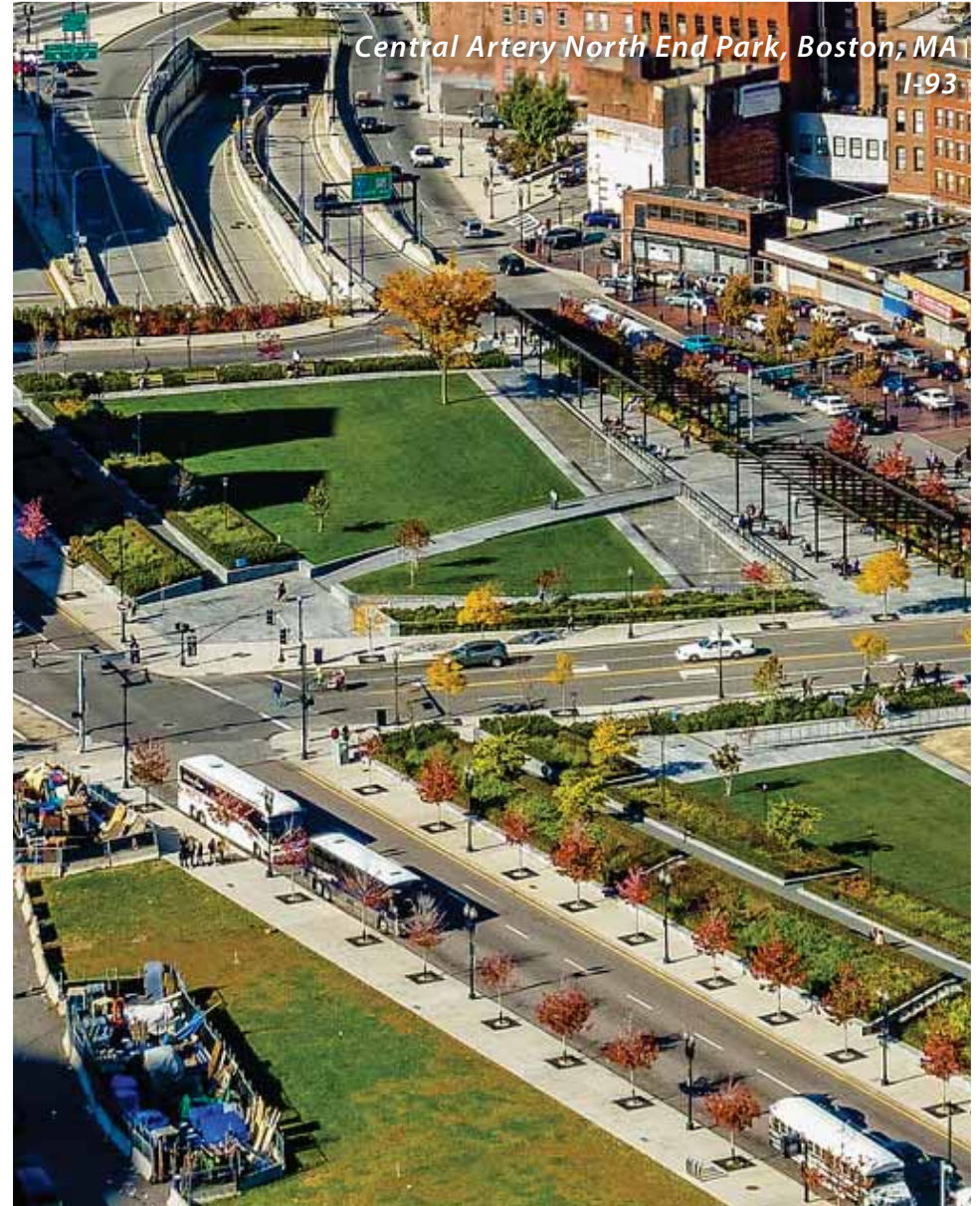
*Klyde Warren Park, Dallas, TX  
Hwy 366*



*Southern Gateway Park, Dallas, TX  
I-35E*



*Central Artery North End Park, Boston, MA  
I-93*





HARGREAVES JONES PRECEDENT: PHILADELPHIA PENN'S LANDING





HARGREAVES JONES PRECEDENT: PHILADELPHIA PENN'S LANDING





An aerial photograph of a city, likely Los Angeles, showing a dense urban landscape with a major highway (I-95) running through it. A large stadium is visible in the upper left quadrant. The image is overlaid with a semi-transparent dark purple rectangle containing white text.

# **I-95 FEASIBILITY STUDY** *APPROACH, SCOPE, SCHEDULE*





WEST SIDE GROWS UNITED NEIGHBORS



PHOTO BY MONIQUE HARMON

## THIS IS AN OPPORTUNITY

**Reconnect** the neighborhoods divided by the construction of I-95 by working with the community and key stakeholders to **re-imagine the future of the Jackson-Adams Corridor** between the Delaware Avenue Bridge and the 6th Street Bridge.

## THIS IS A COLLABORATION

**Build on community efforts** by engaging local leaders, community groups, stakeholders, and neighbors. Through workshops, interviews, and collective visioning this plan will represent the **ideas and aspirations of those who know the needs of the community best.**

## THIS IS THE BEGINNING.



## PROJECT APPROACH: LISTENING, LEARNING, AND COLLABORATING

### WE WILL HONOR HISTORY AND PLAN FOR THE FUTURE

Create a vision that is sensitive to the character, context, and story of a community requires honest and open dialogue between the public and the project team.

### WE WILL BUILD TRUST FROM CLIENT TO COMMUNITY

- **Workshops**
- **Stakeholder working groups**

### WE WILL ASK THE RIGHT QUESTIONS

- What does it look like to successfully “connect” communities with a diverse interests?
- How can obstacles of transportation infrastructure transform?
- How should the unique, local historical and cultural identity of place be celebrated?
- What is needed to unite broad interests and stakeholder platforms into a singular vision?
- How can sustainability and regional character come together?





**PROJECT APPROACH**  
HIGHLIGHTS

**8 site visits**

*which will include:*

**6 advisory committee meetings**

*and*

**4 community workshops**

*that will cover*

**Community visioning**

**Design Options**

**Option Feasibility**

**Final Design Celebration**





## PROJECT KEY POINTS

### I-95 WILL NOT BE RE-ROUTED OR CLOSED

I-95 will not be re-routed, permanently closed, or significantly reconfigured to accommodate the Cap proposal.

### NO RESIDENTS WILL BE DISPLACED, MOVED, OR OTHERWISE IMPACTED BY THIS PROJECT

The project boundary is between Jackson and Adams Street and the 6th Street bridge to Delaware Avenue. Improvements to streets adjacent to the project site may be recommended as a part of the study.

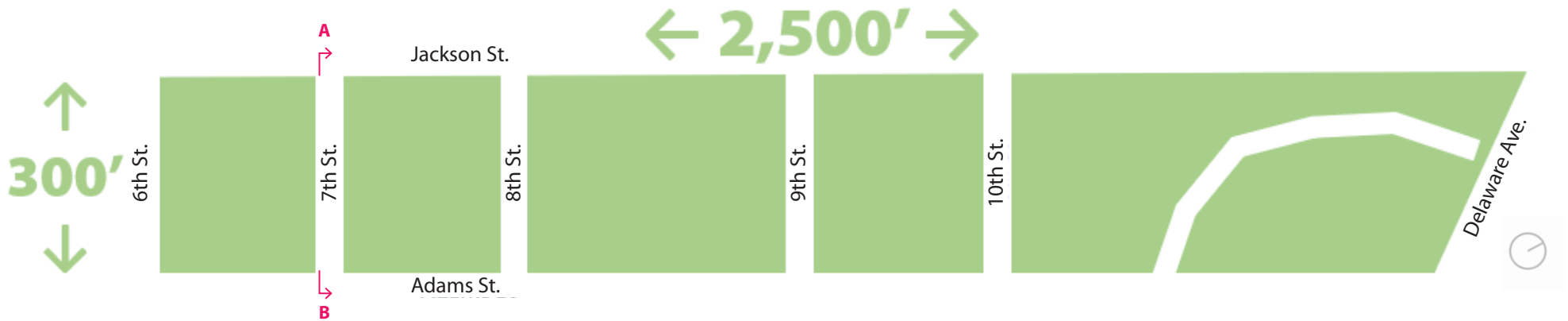




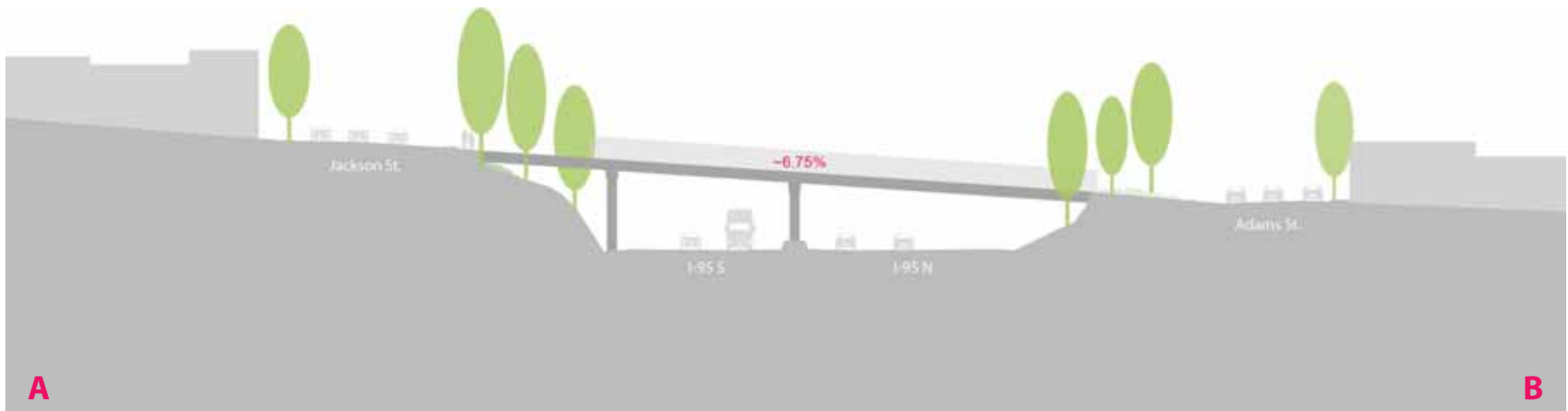
An aerial photograph of a city, likely Philadelphia, showing a dense urban landscape with buildings, trees, and a baseball field. A white dashed line highlights a specific area in the center of the city, possibly indicating the location of the I-95 feasibility study. The text is overlaid on this area.

**I-95 FEASIBILITY STUDY**  
***PRELIMINARY ANALYSIS MAPPING***



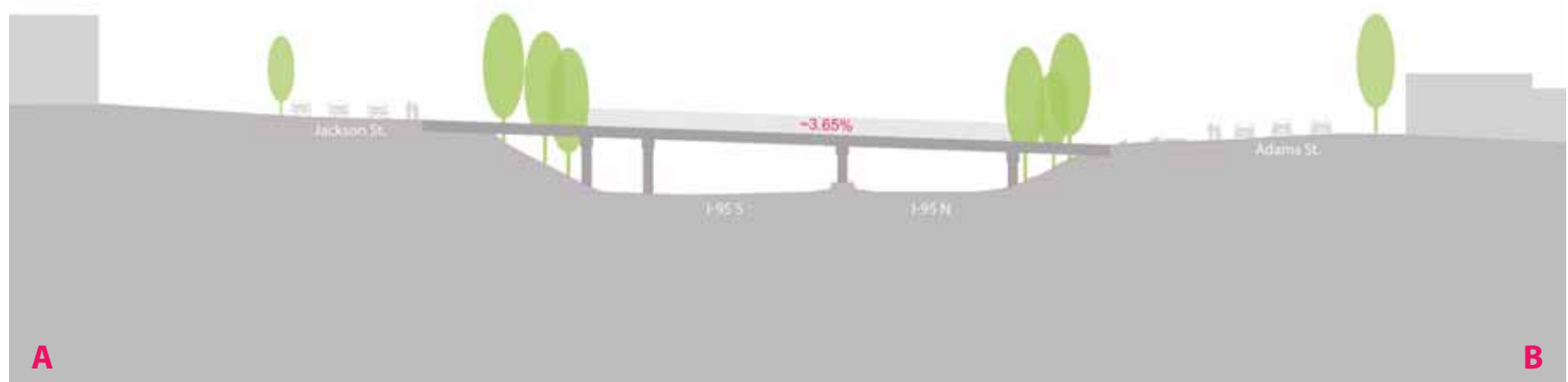
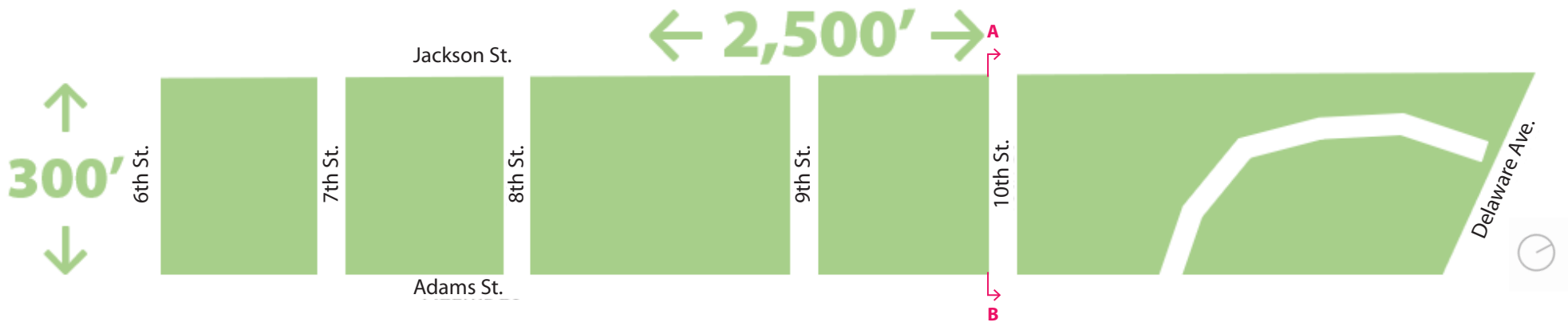


6 blocks; total study area is 12 acres



### Project Site Dimensions





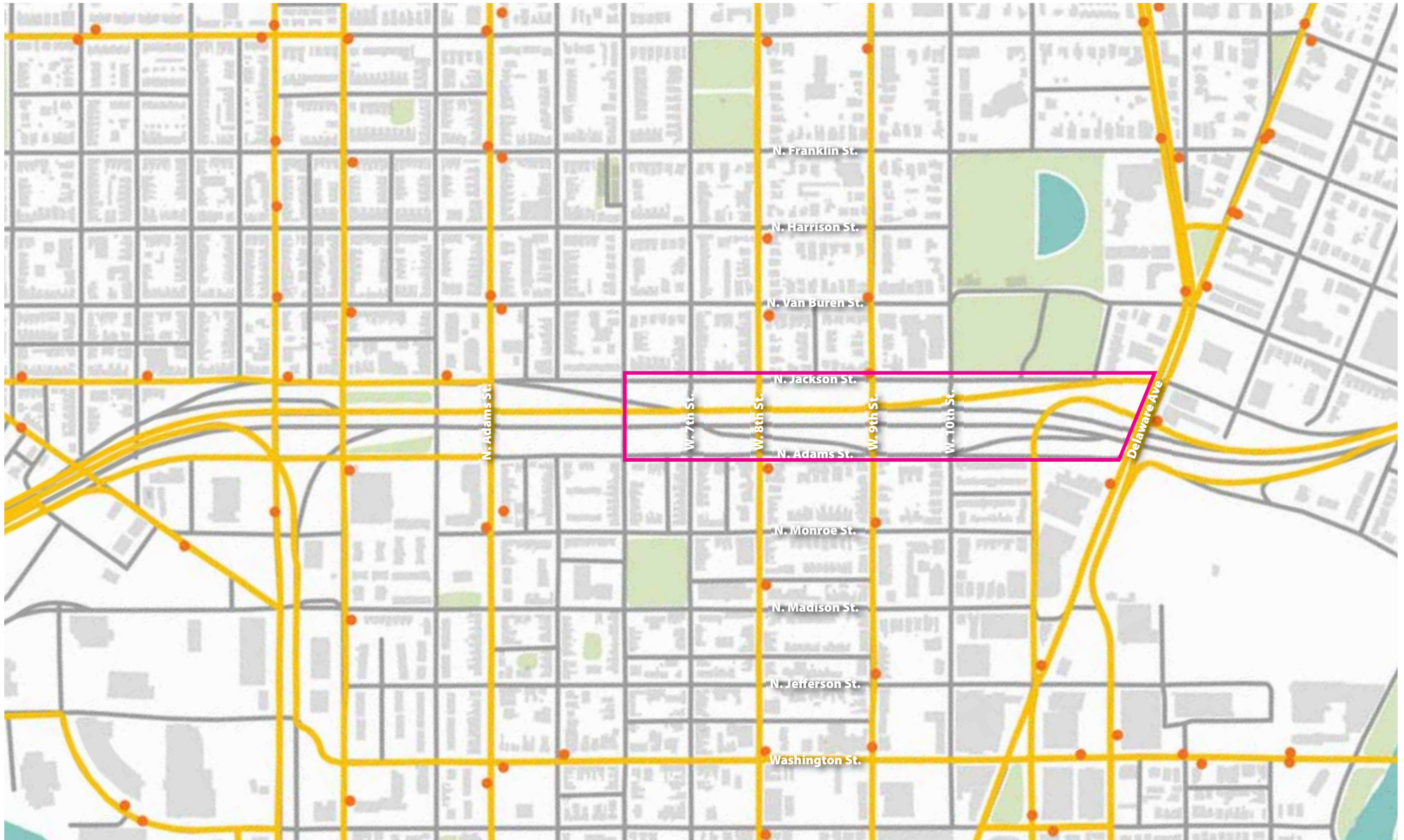
### Project Site Dimensions



I-95 CAP | NOVEMBER 2021 ANALYSIS

HargreavesJones



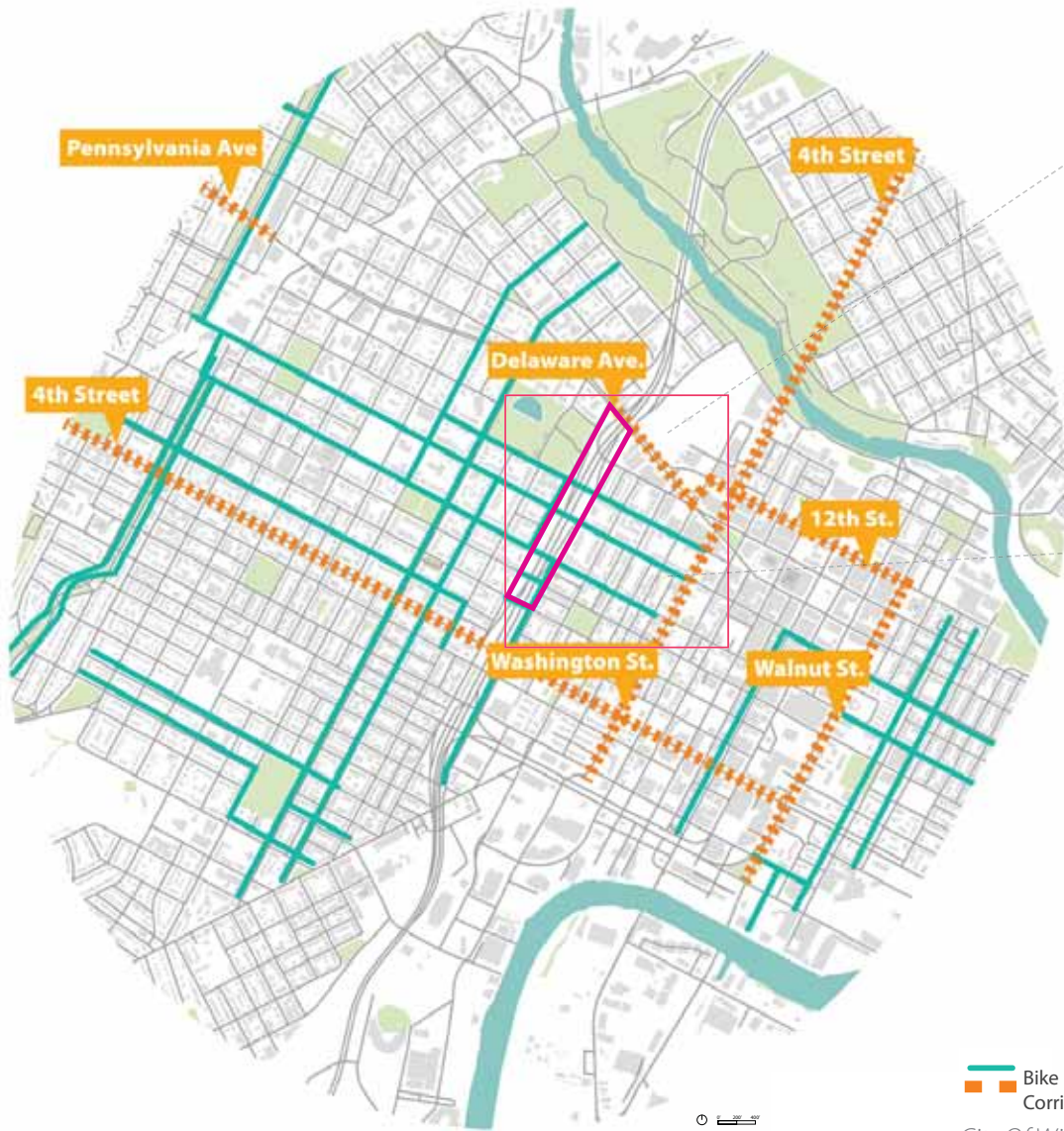


## Bus Routes + Stops

- BUS STOP
- BUS ROUTE







 Bike Plan Proposed Routes  
 Corridor Studies  
 City Of Wilmington Bike Plan

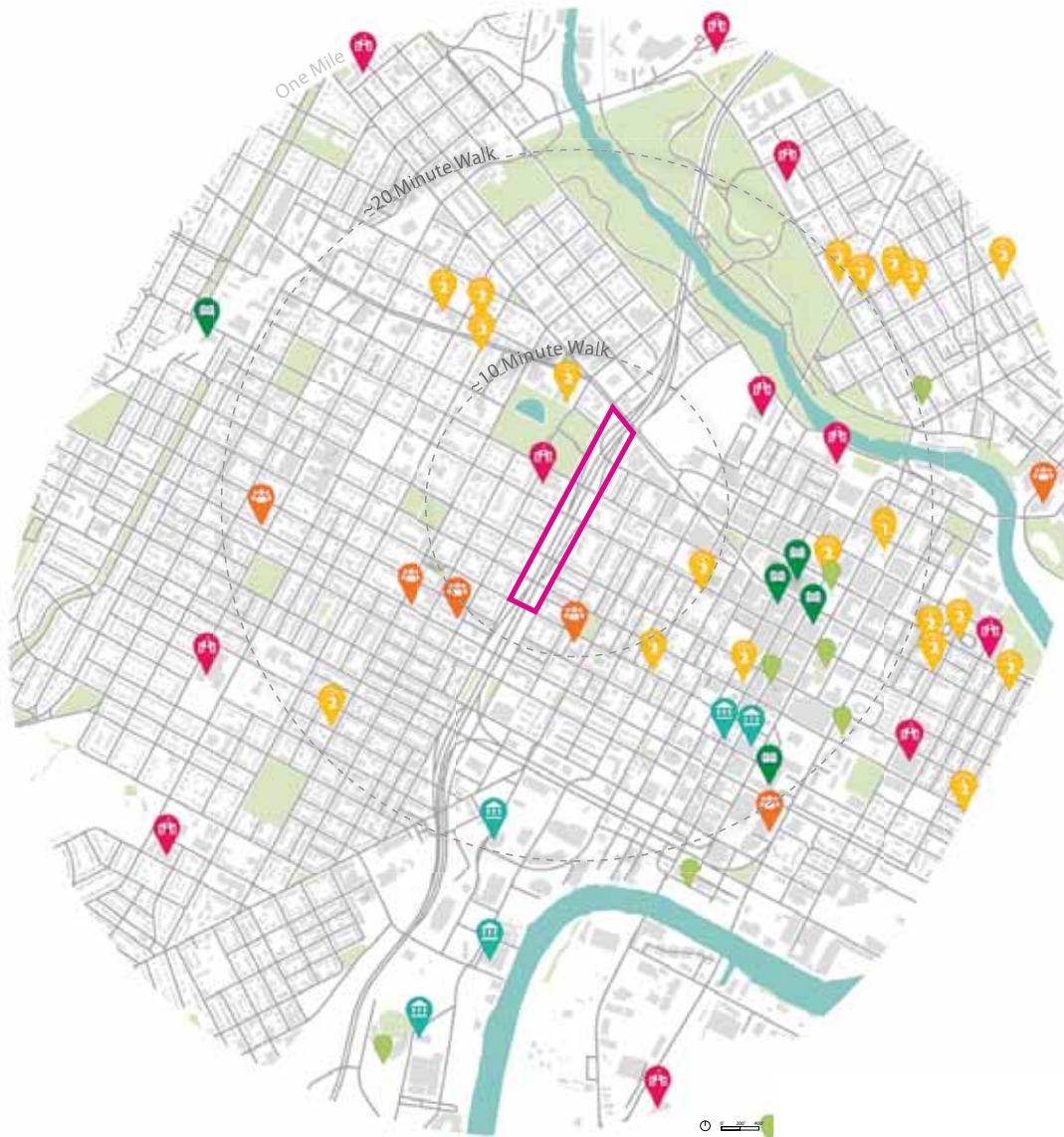
## City Of Wilmington Bike Plan





I-95 CAP | NOVEMBER 2021 ANALYSIS

HargreavesJones





## Within One Mile Of The Project Site:

-  **5** Museums
-  **5** Libraries
-  **11** Schools
-  **20+** Places Of Worship
-  **4+** Community Centers
-  **7+** Landmarks
-  **~10** Parks

### Landmarks + Institutions



An aerial photograph of a city, likely Philadelphia, showing a dense urban landscape with a baseball stadium (Citizens Bank Park) and a highway interchange (I-95) visible. The image is overlaid with a semi-transparent dark blue filter.

**I-95 FEASIBILITY STUDY**  
*Advisory Committee Meeting #1*  
*Recap*



Advisory Committee Meeting #1 Activity (September 30th & November 2nd)

**What would make this project successful?**

*Write one word or phrase that describes your optimism*

*Trip generator*

*Community restorations*

*Life and energy*

*Amenities for the neighborhoods*

*Improve air quality*

***Bring together different communities***

*A project appreciated by locals*

*Connections of people and places*

*Include those experiencing homelessness*

*Universally accessible*

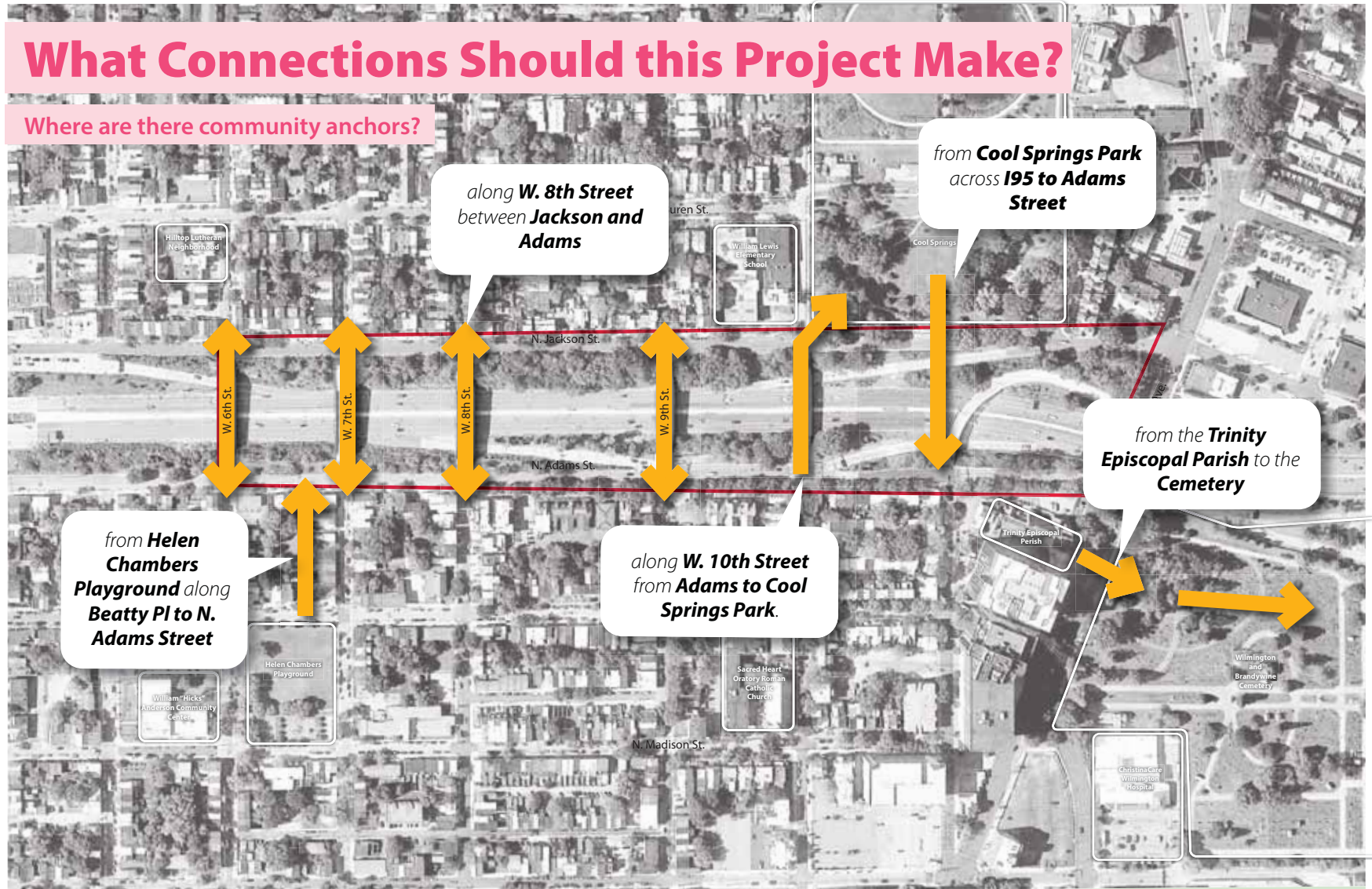
*A place for teens*



## Advisory Committee Meeting #1 Activity (September 30th & November 2nd)

# What Connections Should this Project Make?

Where are there community anchors?





# PEDESTRIAN ONLY ZONES SHADE CAFE/MOVEABLE SEATING

TRAFFIC CALMING PUBLIC RESTROOMS

POLLINATOR GARDEN MULTI-FUNCTION LANDSCAPE

MURALS AND COLOR CONCESSIONS STORMWATER MANAGEMENT

WAYFINDING FITNESS CLASS SPACE

MARKET SPACE BIKE SHARE BIRD HABITAT EXERCISE EQUIPMENT

PROTECTED BIKE LANE INTERPRETATION/HISTORY

COMMUNITY GARDEN PICNIC AREAS PLACES TO SUNBATHE

PERFORMANCE VENUE FLEXIBLE USE LAWN

CONTEMPLATIVE SPACE COVERED EVENTS VENUE TRANSIT STOP BIKE SKILLS AREA PLAYGROUND SKATEBOARDING

TREES RENTABLE PAVILION SPORT COURTS CAR SHARE NIGHT PROGRAM WINTER PROGRAM SMALL GROUP SEATING

Not Favored

CAR SHARE WINTER PROGRAM PLACES TO SUNBATHE  
RETAIL ON STREET PARKING CITY WATCHING RIDE-SHARE PICKUP POINT  
SKATEBOARDING COVERED EVENTS VENUE SPORT COURTS COMMUNITY GARDEN

Favored



Not Favored



An aerial photograph of a city, likely Philadelphia, showing a dense urban landscape with a baseball stadium (Citizens Bank Park) in the upper left quadrant and a multi-lane highway (I-95) running diagonally from the bottom left towards the top right. The image is overlaid with a semi-transparent dark purple filter.

# **I-95 FEASIBILITY STUDY** *NEXT STEPS & SCHEDULE*



## NEXT STEPS

- Compile community feedback
- Draft initial concepts
- Present initial concepts to the Advisory Committee
- Present concepts at Community Workshop #2 (Stay tuned for dates!)



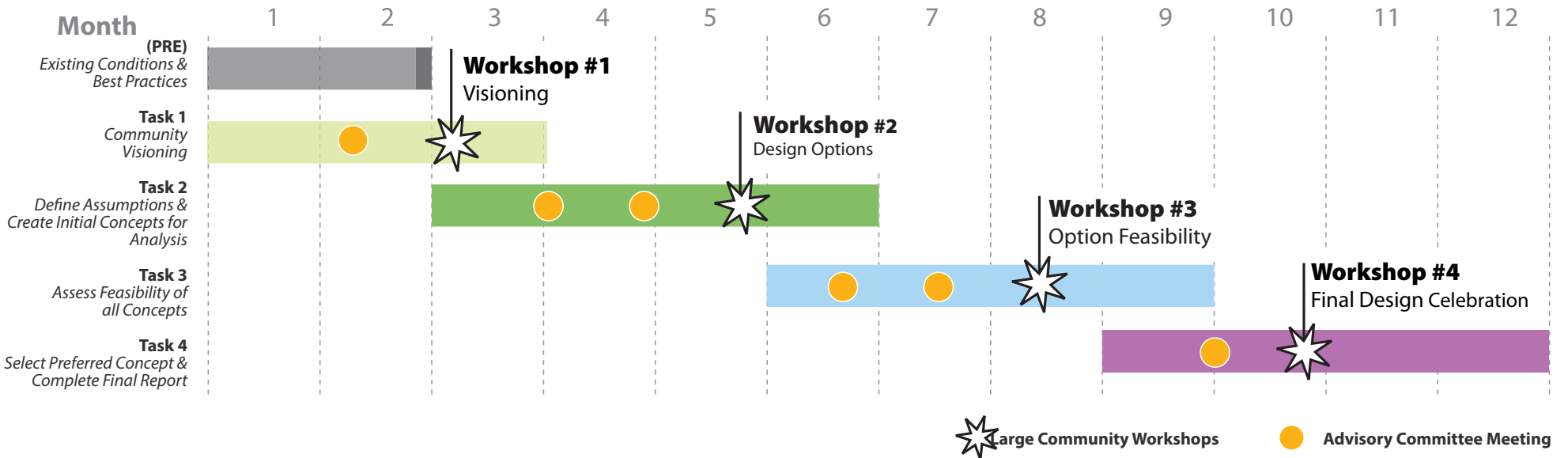


**TASK 1**  
COMMUNITY VISIONING


**TASK 2**  
DEFINE ASSUMPTIONS AND  
CREATE INITIAL CONCEPTS FOR  
ANALYSIS

**TASK 3**  
ASSESS FEASIBILITY OF ALL  
CONCEPTS

**TASK 4**  
SELECT PREFERRED CONCEPT &  
COMPLETE FINAL REPORT





An aerial photograph of a city, likely Los Angeles, showing a dense urban landscape with a mix of residential and commercial buildings. A prominent feature is a large, circular stadium, likely Dodger Stadium, located in the upper left quadrant. A major highway, I-95, runs diagonally across the lower left portion of the image. The overall scene is captured from a high angle, providing a comprehensive view of the city's layout and infrastructure.

**I-95 FEASIBILITY STUDY**  
*DISCUSSION &*  
*WORKSHOP ACTIVITIES*



## DISCUSSION + QUESTIONS

What should this project be called?

- *Bridging I-95: Connecting the Community*
- *Wilmington, DE I-95 Cap Feasibility Study*
- *Something Else?*

What are the **OPPORTUNITIES** here?

What are the **CHALLENGES**?

Questions?





# Health + wellness: this community needs...?

Place **GREEN** stickers for those you agree with, and **RED** for those you do not agree with

## Fitness class space

Place a **RED** sticker if you feel this idea is not suitable for this neighborhood

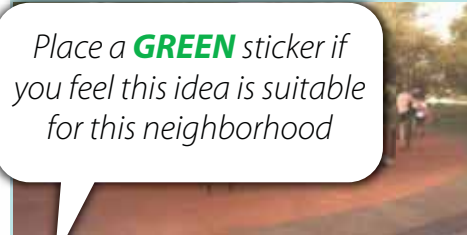


Place stickers here



## Exercise stations

Place a **GREEN** sticker if you feel this idea is suitable for this neighborhood



Place stickers here



## Running loops



Place stickers here

## Bike skills



Place stickers here

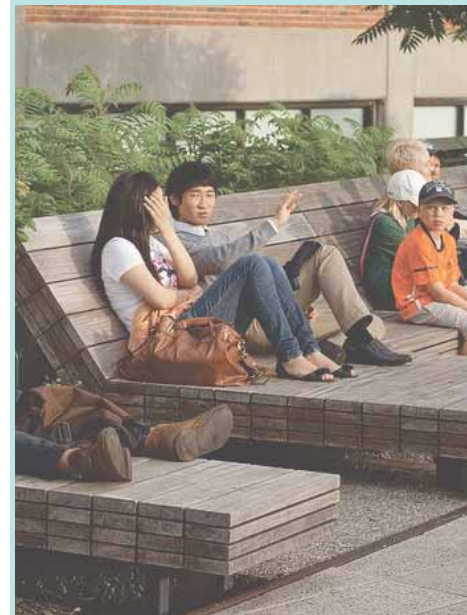
## Contemplative space



Place stickers here



## Places to sunbathe



Place stickers here

## Skateboarding



Place stickers here

## Flexible lawn



Place stickers here

## Dog play



Place stickers here

## Sport courts



Place stickers here

## Other

Have an idea that isn't shown? **WRITE** it in here!

Place stickers here



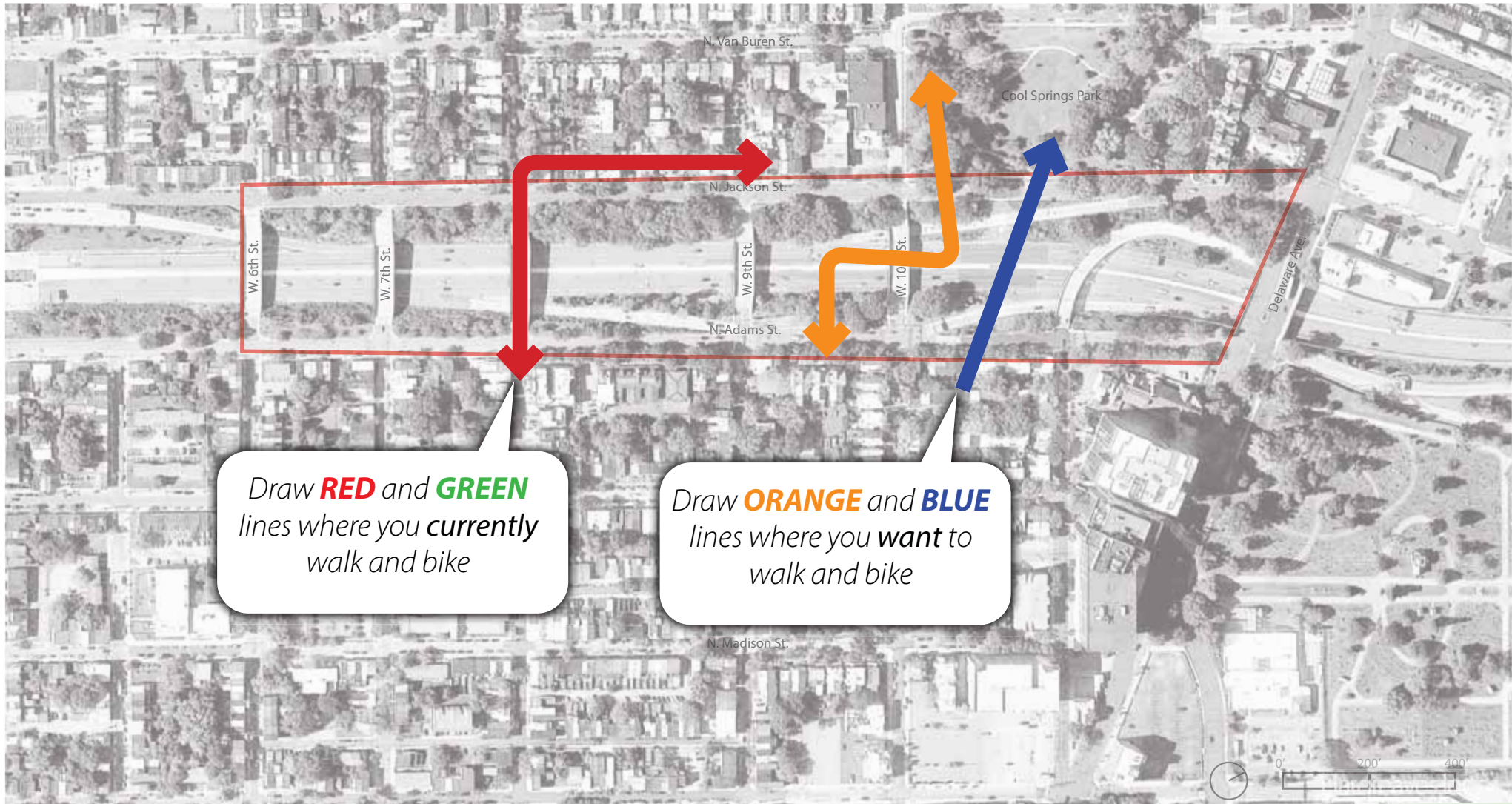
# Where do you walk or bike? Where would you walk or bike, if you could?

 I CURRENTLY WALK HERE

 I WANT TO WALK HERE

 I CURRENTLY BIKE HERE

 I WANT TO BIKE HERE





# **Let's make a vision for the future of I-95**

*When I picture the future of this place, I envision...*

***A colorful community park***

***Gardens for bees***

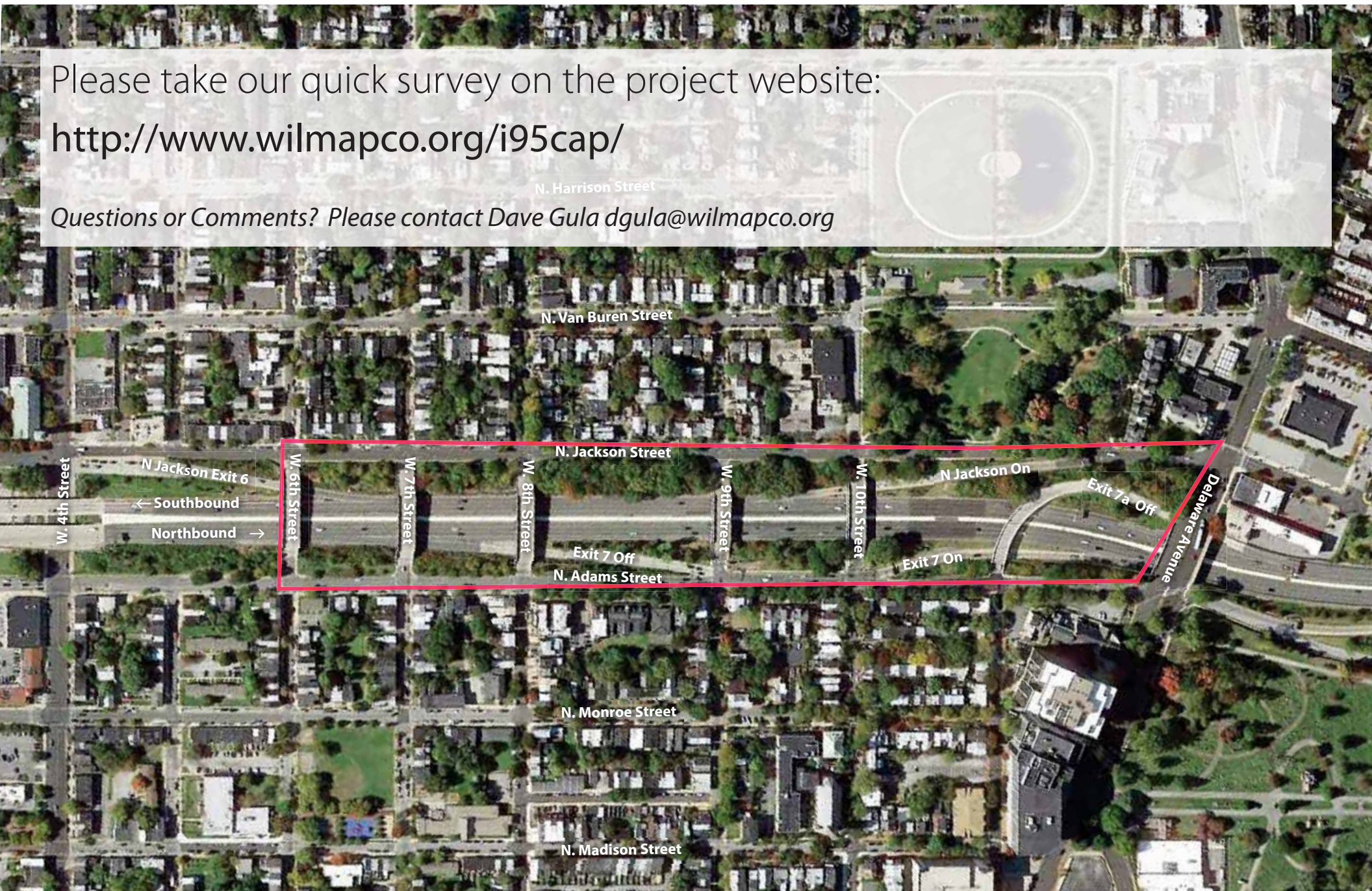
***A place for everyone***



Please take our quick survey on the project website:

<http://www.wilmapco.org/i95cap/>

Questions or Comments? Please contact Dave Gula [dgula@wilmapco.org](mailto:dgula@wilmapco.org)



N. Harrison Street

N. Van Buren Street

N. Jackson Street

N Jackson On

Exit 7a Off

Delaware Avenue

W. 4th Street

N Jackson Exit 6

← Southbound

Northbound →

W. 6th Street

W. 7th Street

W. 8th Street

Exit 7 Off

N. Adams Street

W. 9th Street

W. 10th Street

Exit 7 On

N. Monroe Street

N. Madison Street